



POWER BURNER THERMAL LIQUID HEATER

G---RHT Models, Bent Steel Liquid Tube Furnace

500,000 - 2,500,000 BTUH

Power Gas Fired, Light Oil or Combination

**207WW Thermal
Liquid Heater**

**Temperatures to 600°F
Pressures to 125 PSI**

THE PARKER DESIGN

The Parker liquid tube design offers an extremely efficient, reliable heater built for the long term with ease of maintenance. The Parker design offers many advantages. Compare ours to the competition.

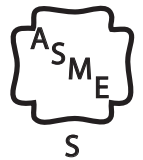
ADVANTAGES

- Sealed combustion chamber offers high efficiencies with low excess air levels.
- Less heat loss due to liquid tube furnace and sealed combustion chamber design.
- Flexible tubes, no thermal shock problems.
- Extra heavy boiler tubes
1-5/16" OD, minimum 0.12" (11GA) heavy thickness steel, built for long term service life.
- Double welded tube bundle. No rolled, ferrule fit, or gasket type connections. Tube bundle is baffled/ designed to match system flow requirements.
- Factory set tube bundle pass baffling to match system flow
- Units can go through a 35" door.
- Modular cabinet construction.
- Lighter weight. No refractory.
- Multiple burner options including Ultra Low NOx

Safety

Our ASME tube bundle is extremely flexible and offers a long life with a 25 year warranty against thermal shock. No Parker Boiler has ever been known to experience an internal explosion.

PARKER BOILER CO.
5930 Bandini Boulevard
Los Angeles, CA 90040
Tel (323) 727-9800
Fax (323) 722-2848
www.parkerboiler.com
BROCHURE 207WW 1D0



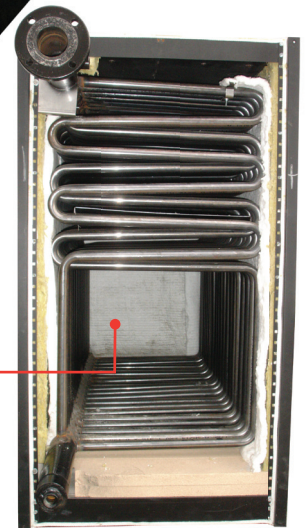
Low Cost Operation

The staggered tubing design provides a 10-pass self-baffled heating surface to increase efficiency

Codes / Approvals

All Parker Heater Boilers are manufactured in accordance with the ASME Power Boiler Code, and registered with the National Board of Boiler and Pressure Vessel inspectors. The boiler, burner and controls are prewired, factory tested. The burner is Listed by a Nationally Recognized Testing Laboratory as Gas, Oil or Combination Gas/Oil fired and complies with ASME CSD-1.

Liquid Tube
Furnace



Heavy Insulated Cabinet

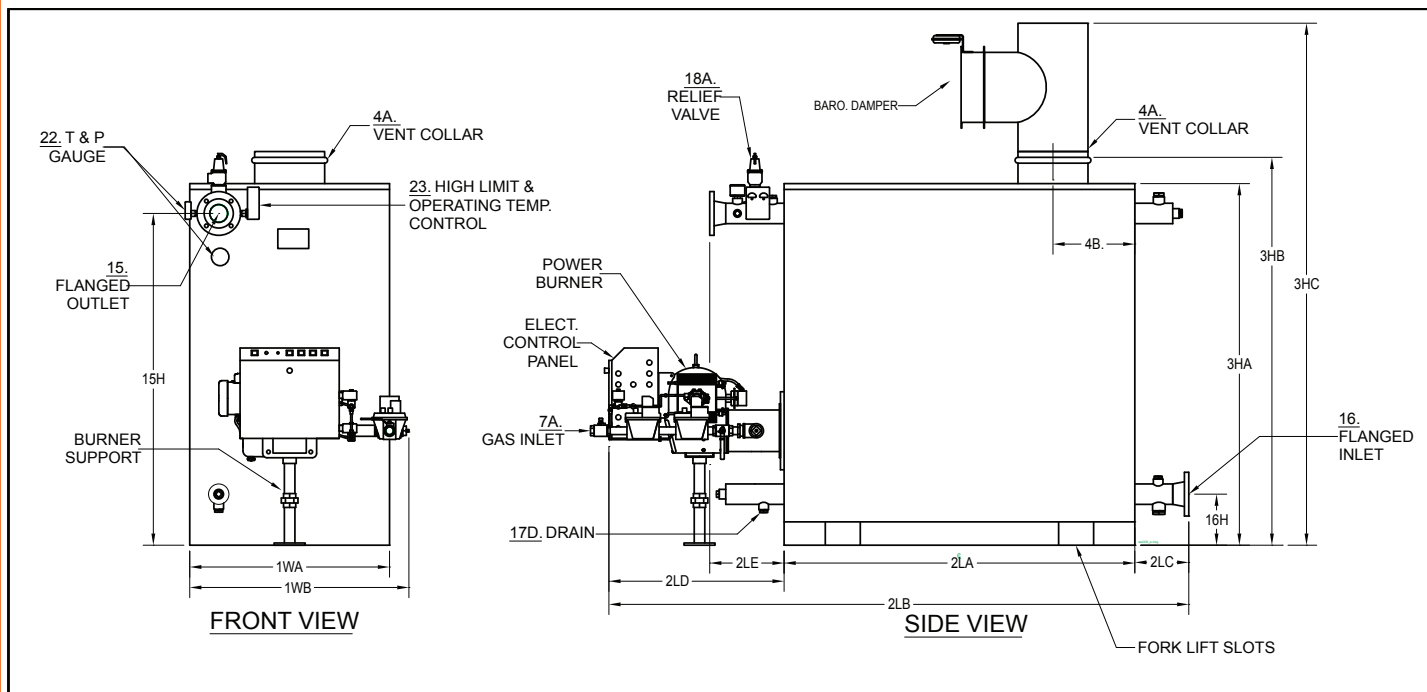
The cabinet is durably constructed with heavy steel, insulated with high temperature thermal fiber insulation to effectively reduce heat losses to a minimum.

"Never a Compromise for Quality or Safety"



PARKER BOILER THERMAL LIQUID HEATER POWER GAS, OIL, COMBINATION OR LOW NO_x FIRED MODELS G672R TO G3120R

SPEC. SHEET D-207WW
1E0



NO.	ITEM	" * " = G(gas), O (oil), GO (gas oil comb)	MODEL NO.	*672RHT	*1008RHT	*1536RHT	*2304RHT	*2640RHT
A	BTU Input		1000's BTU/HR.	500	1008	1536	2000	2500
B	BTU Output		1000's BTU/HR.	400	807	1229	1600	2000
C	Heating Surface		SQ. FT.	93	140	234	294	358
1WA	Width of Cabinet		IN.	35	35	35	35	35
1WB	Width Overall Including Controls (controls can be removed)		IN.	40	40	42	44	44
2LA	Length of Cabinet		IN.	32	47	68	83	101
2LB	Length Overall		IN.	72-1/2	85-1/2	111-1/2	126-1/2	144
2LC	Length of Back Header Flange Beyond Cabinet		IN.	9-1/2	7-1/2	9	9	8-1/2
2LD	Length of Burner Beyond Cabinet		IN.	31	31	34-1/2	34-1/2	34-1/2
2LE	Length of Front Header Beyond Cabinet		IN.	13	13	13	14	14
3HA	Height of Cabinet		IN.	62	62	62	62	62
3HB	Height with Vent Collar		IN.	66-1/2	66-1/2	66-1/2	66-1/2	66-1/2
3HC	Height Overall Including Barometric Damper		IN.	81	84	90	92	96
4A.	Vent Collar Diameter		IN.	8	10	14	16	18
4B.	Vent Stack Location - From Rear of Boiler Cabinet		IN.	12	17-1/2	23	26	30
7A	Std. Nat. Gas Inlet Size, @ Inlet Supply Pressure; Min: 7" W.C.; Max: 14" W.C.		IN.	1	1-1/4	1-1/2	2	2
7B	Hi Pressure Natural Gas or LP Gas Inlet Size, Supply Pressure 1-5 PSI		IN.	1	1	1-1/2	1-1/2	2
8A	Oil Input Required @ Manuf.'s Capacity Rating (#2 Oil)		GPH.	3.5	7	14.5	17.5	22
8B	Oil Supply Line Size - Minimum for up to 30'		IN.	3/8	1/2	3/4	3/4	
15 & 16	Inlet & Outlet Size (CL. 150 Flanged)		IN.	3	3	3	3	3
15H	Outlet Height from Floor		IN.	57	57	57	57	57
16H	Inlet height from Floor		IN.	8-3/4	8-3/4	8-3/4	8-3/4	8-3/4
17D	Drain Line Size Required		IN.	1	1	1	1	1
18AHP	Safety Relief Valve Size - 125 PSI		OUTLET IN.	1-1/2	1-1/2	1-1/2	1-1/2	1-1/2
20A	POWER SPECIFICATIONS		VOLTAGE/Ph	115V/1Ph				
20B	Controls (115V-1Ph-60Hz)		AMPS	5 AMPS				
21	Blower HP - *G (gas)		HP	1/3	1/3	1/2	1/2	3/4
	Liquid Capacity		GAL.	16	22	35	43	56
	Net Weight of Heater		LBS.	1440	1685	2350	2800	3450
	Crated Shipping Weight of Boiler- Approximate		LBS.	1640	1935	2650	3130	3900

Recommended Clearances 48" around all sides. Inspection Doors 18"; Controls 24"; Electrical Panel 30"; 3Ph (36") ; Additional space may be required by Local Codes.

Notes: Due to continuous improvement, specifications are subject to change without notice.

D-207WW.DWG



"Never a Compromise for Quality or Safety"

PARKER BOILER CO.
5930 Bandini Boulevard
Los Angeles, CA 90040
Tel (323) 727-9800
Fax (323) 722-2848
www.parkerboiler.com
BROCHURE 207WW 1D0