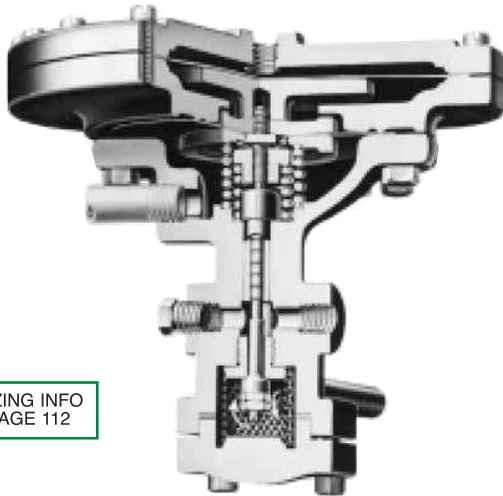


TYPE A73 AIR ADJUSTED PILOT



SIZING INFO
PAGE 112

TYPE A85 AIR ADJUSTED VACUUM PILOT

APPLICATION DATA

- Pressure Regulating for Remote Locations
- Pneumatic Pressure Control
- Pneumatic Temperature Control
- Process Control where Controller is Far from Pilot

RATINGS (Maximum Inlet Conditions)

Construction	Pressure PSIG (bar)	Temperature °F (°C)
Cast Iron	250 (17.2)	@ 450 (232)
Cast Steel	600 (41.4)	@ 750 (400)

TYPICAL CONFIGURATIONS

- PRESSURE REDUCING**TYPE EA
- PRESSURE REDUCING**TYPE E2A
- PRESSURE REDUCING**TYPE E5A
- PRESSURE REDUCING**TYPE E6A
- WATER PRESSURE REDUCING**TYPE C34A
- TEMPERATURE & PRESSURE**TYPE EAT61

Canadian Registration # OC 0591.9C

**TYPE A SERIES
PILOTS
AIR ADJUSTED PILOTS**

CONTROLS -30 in. hg to 150 PSIG

- Air Loaded
- Remote Control
- Spring Operated
- Normally Closed
- Packless Construction
- Economic Use of Air
- Ease of Adjustment
- Accurate to ±1 psi
- Delivery to Loading Air Pressure Ratios from 5/8 to 1 up to 6-2/3 to 1 psi
- Fluid, Gas & Vapor Applications
- Accurate Regulation Unaffected by Service Conditions
- Easy In-line Maintenance

OPTIONS

- Integral Mount
- Air Filter Regulator/Gauges

MODELS*

- **TYPE A** for pressure control at low pressures. Delivery to loading pressure is 1 to 1 psi.
- **TYPE A35** for pressure control at very low delivery pressures as in some heating system control. Delivery to loading pressure is 1/2 to 1 psi.
- **TYPE A43 & A54** for pressure control at medium to high pressures. Delivery to loading pressure is 2% to 1 psi.
- **TYPE A53** for pressure control at medium pressures. Delivery to loading pressure is 4 to 1 psi.
- **TYPE A70 & A73** for pressure control at high delivery pressures when available loading air is at low pressure. Delivery to loading pressures are 15 and 6% (respectively) to 1 psi.
- **TYPE A82** Vacuum for pressure control of very low pressure or systems varying between very low pressure and light vacuum. Delivery to loading pressure is 1 to 1 psi.
- **TYPE A83** Vacuum for temperature control. Delivery to loading pressure is 1 to 1 psi.
- **TYPE A84** Vacuum for temperature control at lower delivery pressure features more gradual response. Delivery to loading pressure is 2% to 1 psi.
- **TYPE A85** Vacuum for temperature, pressure and vacuum control. Delivery to loading pressure is 3% to 1 psi.
- **TYPE A86** for pressure control at low pressures. Delivery to loading pressure is 1 to 1 1/6 psi.
- **TYPE A87** Vacuum for temperature, pressure and vacuum control. Delivery to loading pressure is 8% to 1 psi.

*Ranges are approximate.

TYPE A SERIES PILOTS

AIR ADJUSTED PILOTS

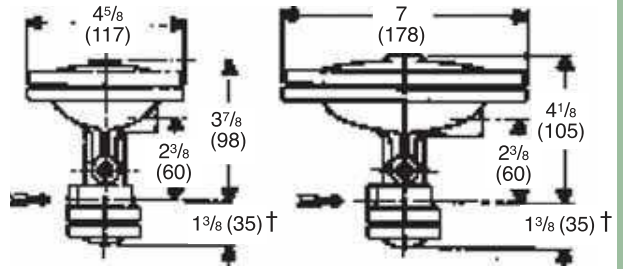
SPECIFICATION

The Pilot shall be separate from the main valve and connected to it with a male union. The Pilot shall be normally closed design with packless construction. A strainer screen shall be built into the Pilot inlet. The Pilot shall be interchangeable on all sizes of main valves.

MATERIALS OF CONSTRUCTION

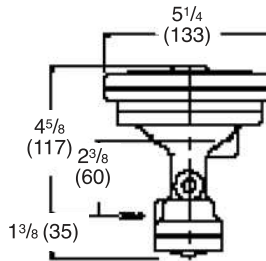
Body, Cast Iron	ASTM A126 CI B
Body, Cast Steel	ASTM A216 GR. WCB
Stem	303 St. Stl. ASTM A582 COND A
Disc	440 St. St. ASTM A276-75 COND A
Seat	420 St. Stl ASTM A276 COND A
Gasket	Non-Asbestos
Diaphragm	301 St. Stl. MIL-5-5059C
Spring	Inconel

TYPE A AIR ADJUSTED PILOT

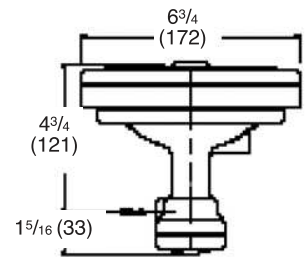


Type A or A83
6 lbs (2.7 kg)

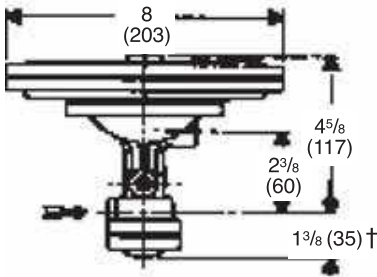
Type A82
11 lbs (5 kg)



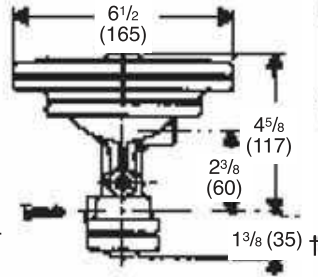
Type A43
11 lbs (5 kg)



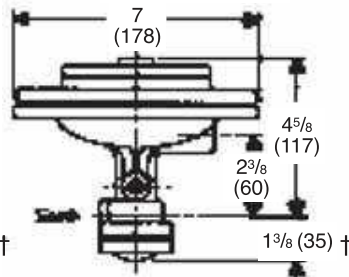
Type A54
19 lbs (8.6 kg)



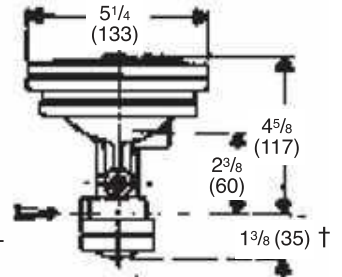
Type A73 or A70
15 lbs (6.8 kg)



Type A53 or A85
12 lbs (5.5 kg)



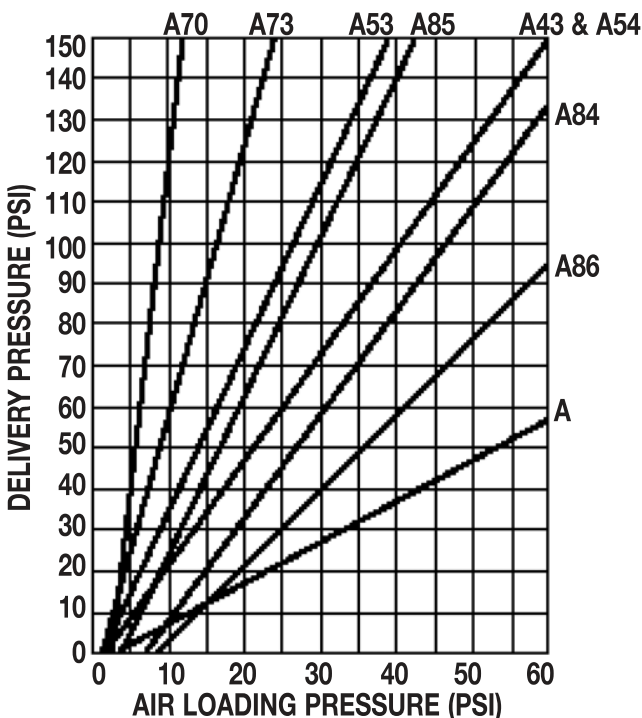
Type A35
14 lbs (6.4 kg)



Type A84 or A86
11 lbs (5 kg)

†For Integral Mount Pilot, this dimension is 5/8" (16).

PILOTS FOR POSITIVE PRESSURE



PILOTS FOR VACUUM PRESSURE

