

Series 50F7

6000# Seal Weld Ball Valve



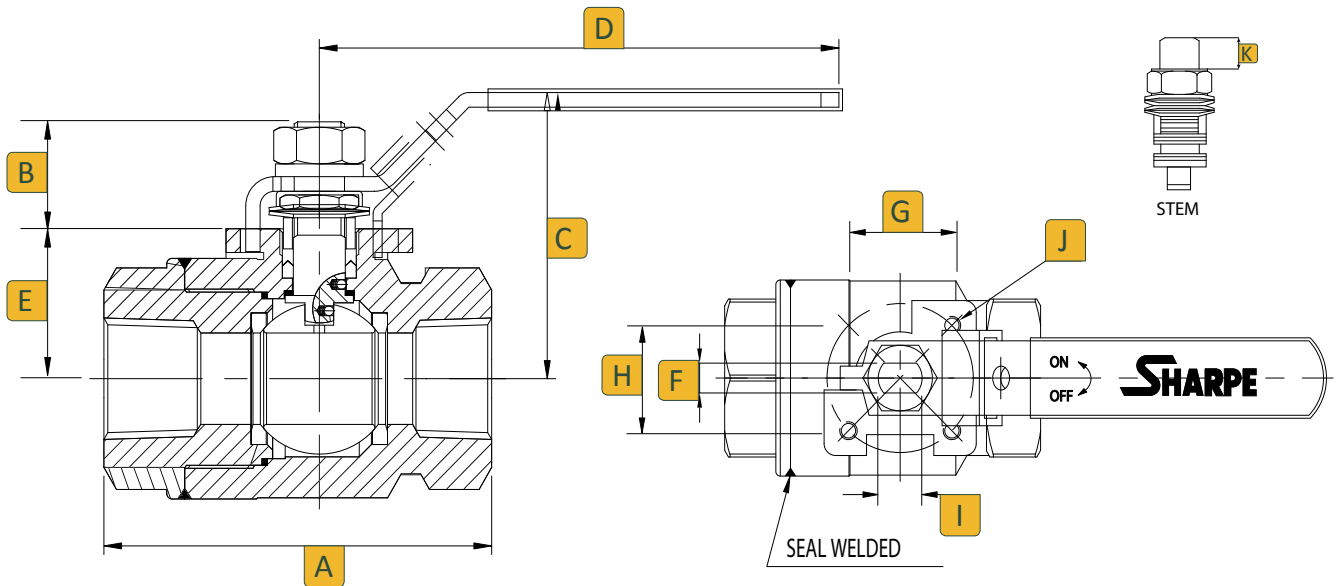
Valves, Automation & Controls

Features

- 6000 CWP rating
- Seal weld construction
- ASTM A351 CF8M
ASTM A216 WCB
- ASME B16.34 Class 2500
- NACE MR-0175
- API 608
- Locking device
- Blow out proof stem
- Anti-static device
- ISO 5211 mounting pad



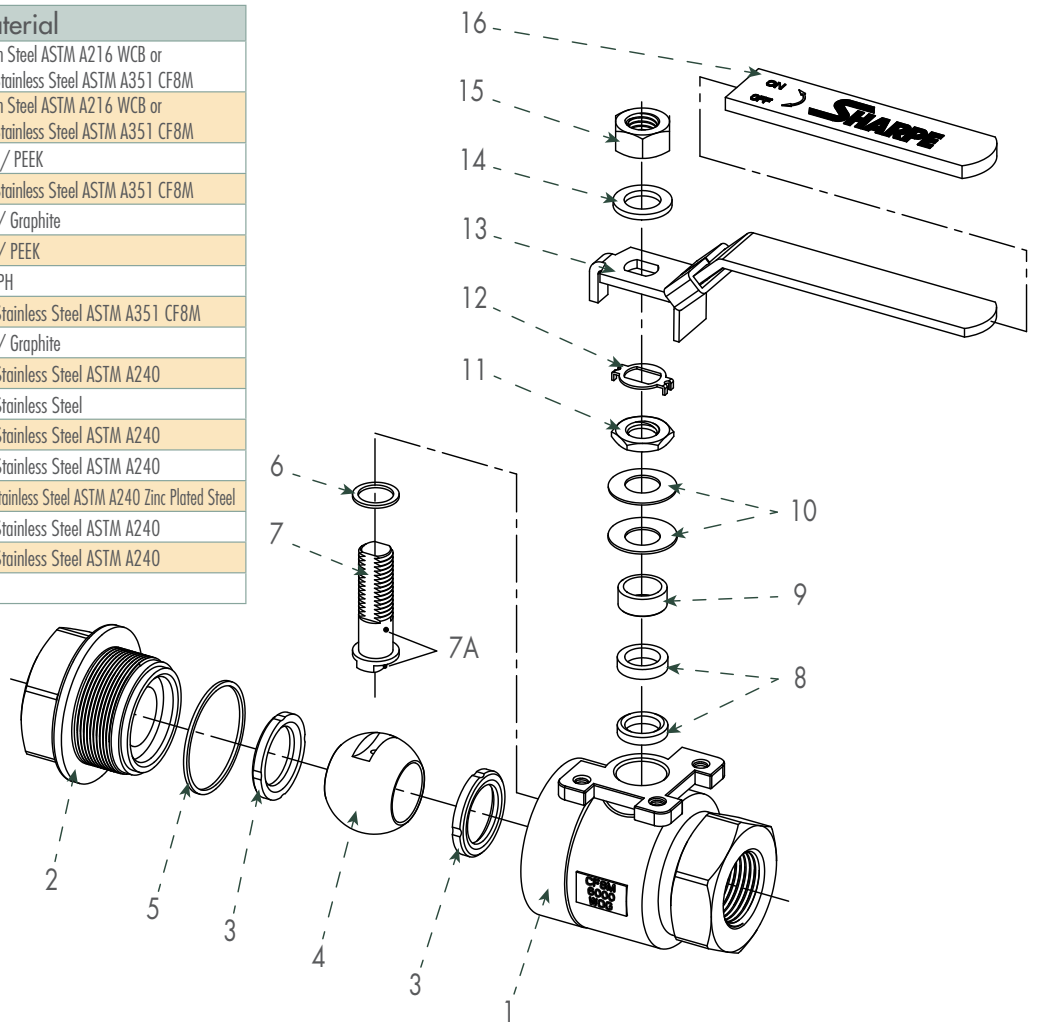
Dimensions



Dimensions (Inches)

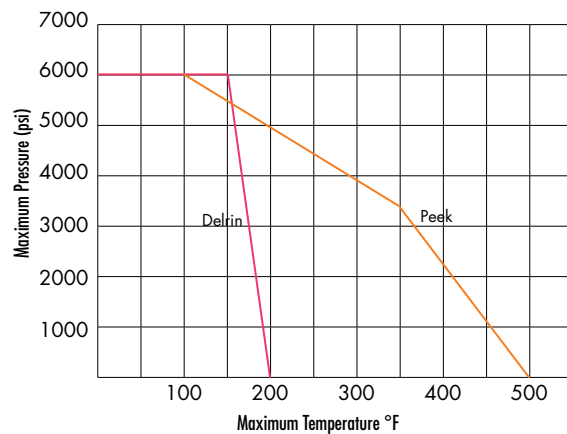
Size	A	B	C	D	E	F	G	H	I	J	K
1/4	2.80	0.50	2.42	4.17	0.96	0.20	1.00	1.00	0.31	M5	0.23
3/8	2.80	0.50	2.42	4.17	0.96	0.20	1.00	1.00	0.31	M5	0.23
1/2	3.19	0.50	2.42	4.17	0.96	0.20	1.00	1.0	0.31	M5	0.23
3/4	3.78	0.83	2.60	5.06	1.24	0.28	1.17	1.17	0.39	M5	0.45
1	4.25	1.14	3.08	6.50	1.61	0.39	1.39	1.39	0.55	M6	0.75
1-1/4	4.72	1.19	3.27	6.50	1.80	0.39	1.39	1.39	0.55	M6	0.79
1-1/2	5.12	1.56	4.38	8.58	2.39	0.47	1.95	1.95	0.75	M8	1.06
2	5.91	1.56	4.38	8.58	2.39	0.47	1.95	1.95	0.75	M8	1.06

No.	Part Name	Qty	Material
1	Body	1	Carbon Steel ASTM A216 WCB or 316 Stainless Steel ASTM A351 CF8M
2	End Plug	1	Carbon Steel ASTM A216 WCB or 316 Stainless Steel ASTM A351 CF8M
3	Seat	2	Delrin / PEEK
4	Ball	1	316 Stainless Steel ASTM A351 CF8M
5	Gasket	1	PTFE / Graphite
6	Thrust Washer	1	PTFE / PEEK
7	Stem	1	17-4 PH
7A	Anti-static Device	1	316 Stainless Steel ASTM A351 CF8M
8	Stem Packing	2	PTFE / Graphite
9	Gland Packing	1	304 Stainless Steel ASTM A240
10	Belleville Washer	2	301 Stainless Steel
11	Packing Nut	1	304 Stainless Steel ASTM A240
12	Lock Tab	1	304 Stainless Steel ASTM A240
13	Handle	1	304 Stainless Steel ASTM A240 Zinc Plated Steel
14	Lock Washer	1	304 Stainless Steel ASTM A240
15	Handle Nut	1 </td <td>304 Stainless Steel ASTM A240</td>	304 Stainless Steel ASTM A240
16	Sleeve	1	PVC



Technical Information

Size	CV	Port	Weight LB
1/4	7	0.37	1.20
3/8	8	0.37	1.15
1/2	10	0.49	1.50
3/4	35	0.79	2.76
1	68	0.99	4.87
1-1/4	110	1.26	7.41
1-1/2	155	1.50	12.10
2	155	1.50	14.73



Ordering

Fig: 1/2 - 50F7 - 6 - D
Description: 1/2" - 50F7 - 316 Body - Delrin Seat

Size	Series	Body	Seat
1/4	1	50F7	4 Carbon Steel
3/8	1-1/4	50F7	6 Stainless Steel
1/2	1-1/2	50F7	D Delrin
3/4	2	50F7	P Peek