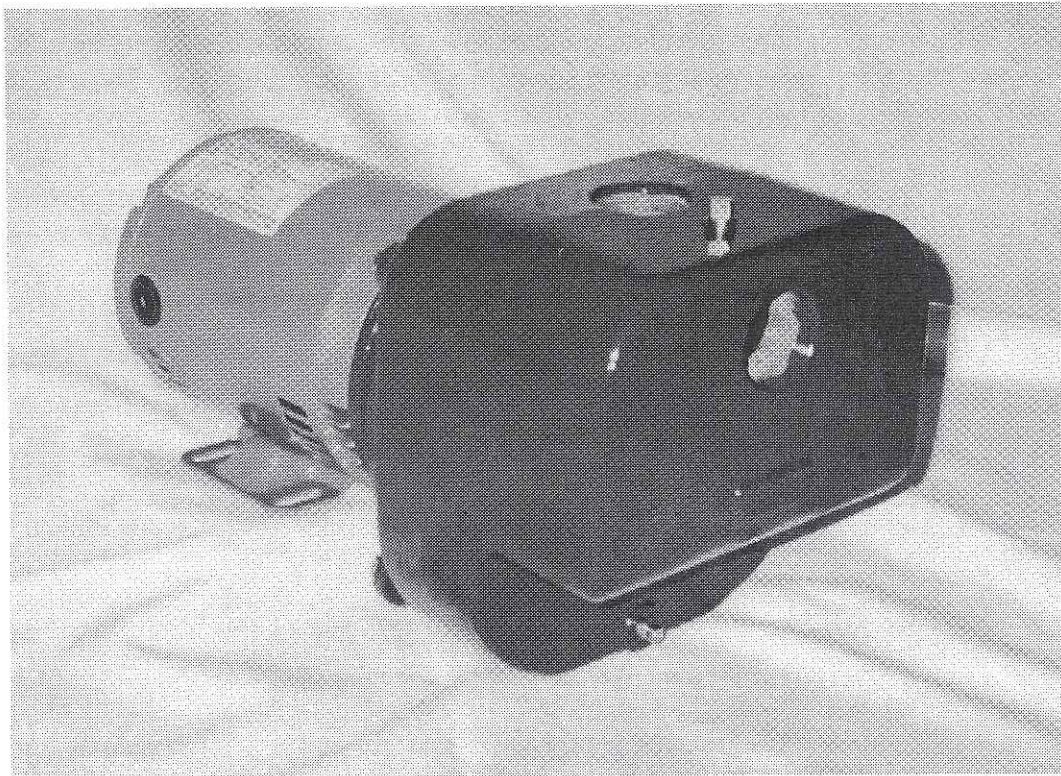


# RUSSELL PUMP

Model PA515

Self Priming, Close Coupled, Bronze Fitted,  
Centrifugal Pump



**TYPICAL APPLICATIONS INCLUDE:** Water Transfer, Light Irrigation,  
Dewatering, Lawn Sprinkling,  
Pressure Boosting, Heat Pumps,  
Air Conditioning Systems

RUSSELL PUMP AND ENGINEERING  
1701 OLSON WAY MARSHALLTOWN, IA 50158  
641-752-4637



# DESIGN FEATURES

## CASING

- Constructed as ASTM A48 class 30 cast iron. Back pull-out design allows the pump to be serviced without disturbing the piping. 1/4 npt suction gauge and 1/8 npt drain tappings are standard. Self-venting design prevents air binding within the pump. After initial priming the pump never needs to be primed again.

## MECHANICAL SEAL

- Type 21 buna-n seal is rated to 225°F and pressures to 175PSI. Carbon seal face mates with the ceramic seat providing years of trouble free service. Alternate seals available upon request.

## IMPELLER

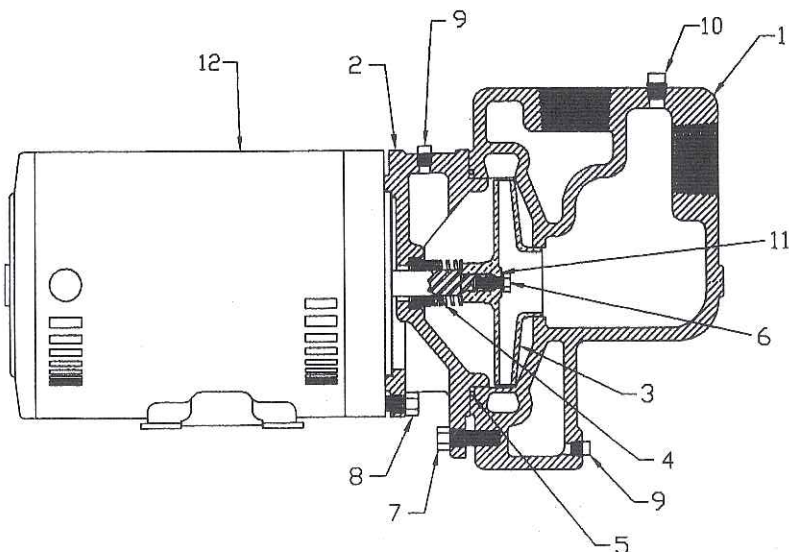
- The hydraulic design of the impeller maximizes pressure and gpm while minimizing horsepower. The enclosed vacuum cast impeller is made of cast bronze.

## ADAPTER

- The precision machining of the adapter allows for easy assembly of the pump. Construction consists of ASTM A48 class 30 cast iron.

## MOTOR

- The NEMA 56J motor utilizes a 416 stainless steel shaft. The motor's heavy duty ball bearings withstand axial and radial thrust loads with no problem. Standard enclosure type is drip-proof but alternates are available.



1	CASING PAS15	CLASS 30 CAST IRON	40025	1
2	ADAPTER AS10	CLASS 30 CAST IRON	30000	1
3	IMPELLER AS10	BRONZE	20000	1
4	MECHANICAL SEAL	BUNA-N	S-100	1
		VITON	S-102	
5	D-RING CASING	BUNA-N	S-109	1
		EPT	S-110	
		VITON	S-111	
6	CAP SCREW	1/4-20UNC X 5/8 SS	70040	1
7	CAP SCREW	3/8-16 X 1 1/4 STEEL	19932	4
8	CAP SCREW	3/8-16 X 1 STEEL	19931	4
9	PIPE PLUG	1/8 NPT BRONZE	69845	2
10	PIPE PLUG	1/4 NPT BRONZE	68585	1
11	LOCKWASHER	1/4 303 SS	0130197	1
12	MOTOR	NEMA 56J	-	1

NOTE: Single phase models do NOT require part numbers 70040 or 0130197