

RUSSELL PUMP

Model PA615

Self Priming, Close Coupled, Bronze Fitted,
Centrifugal Pump



TYPICAL APPLICATIONS INCLUDE: Water Transfer, Light Irrigation,
Dewatering, Lawn Sprinkling,
Pressure Boosting, Heat Pumps,
Air Conditioning Systems

RUSSELL PUMP AND ENGINEERING
1701 OLSON WAY MARSHALLTOWN, IA 50158
641-752-4637

DESIGN FEATURES

CASING

- Constructed as ASTM A48 class 30 cast iron. Back pull out design allows the pump to be served without disturbing the piping. 1/4 npt suction guage and 1/8 npt drain tappings are standard. Self venting design prevents air binding within the pump. After initial priming the pump never needs to be primed again.

MECHANICAL SEAL

- Type 21 buna-n seal is rated to 225°F and pressures to 175PSI. Carbon seal face mates with the ceramic seat providing years of trouble free service. Alternate seals available upon request.

IMPELLER

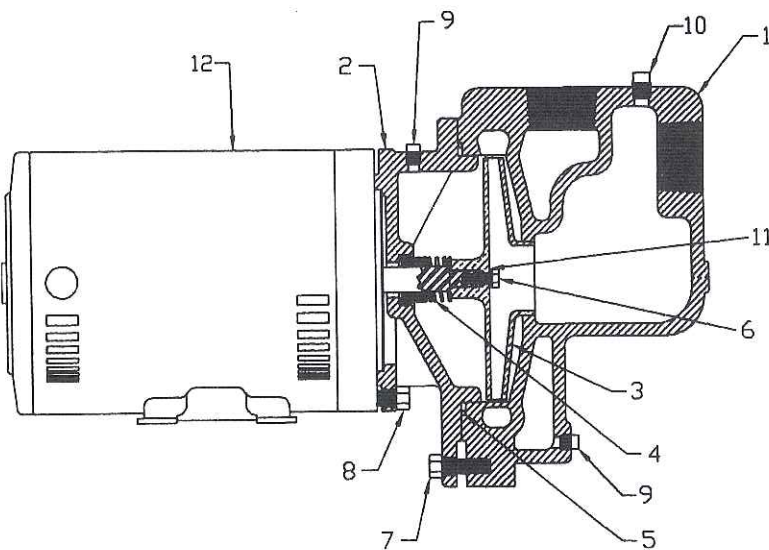
- The hydraulic design of the impeller maximizes pressure and gpm while minimizing horsepower. The enclosed impeller is made of cast bronze.

ADAPTER

- The precise machining of the adapter allows for easy assembly of the pump. Construction consists of ASTM A48 class 30 cast iron.

MOTOR

- The NEMA 56J motor utilizes a 416 stainless steel shaft. The motors heavy duty ball bearings withstand axial and radial thrust loads with no problem. Standard enclosure type is dripproof but alternates are available.



1	CASING P615	CLASS 30 CAST IRON	40022	1
2	ADAPTER A612	CLASS 30 CAST IRON	40002	1
3	IMPELLER A612	BRONZE	20001	1
4	MECHANICAL SEAL	BUNA-N	S-100	1
		EPT	S-101	
		VITON	S-102	
5	O-RING CASING	BUNA-N	S-132	1
		EPT	S-133	
		VITON	S-134	
6	CAP SCREW	1/4-20UNC X 5/8 SS	70040	1
7	CAP SCREW	3/8-16 X 1 1/4 STEEL	19932	4
8	CAP SCREW	3/8-16 X 1 STEEL	19931	4
9	PIPE PLUG	1/8 NPT BRONZE	69845	2
10	PIPE PLUG	1/4 NPT BRONZE	68585	1
11	LOCKWASHER	1/4 303 SS	0130197	1
12	MOTOR	NEMA 56J	-	1