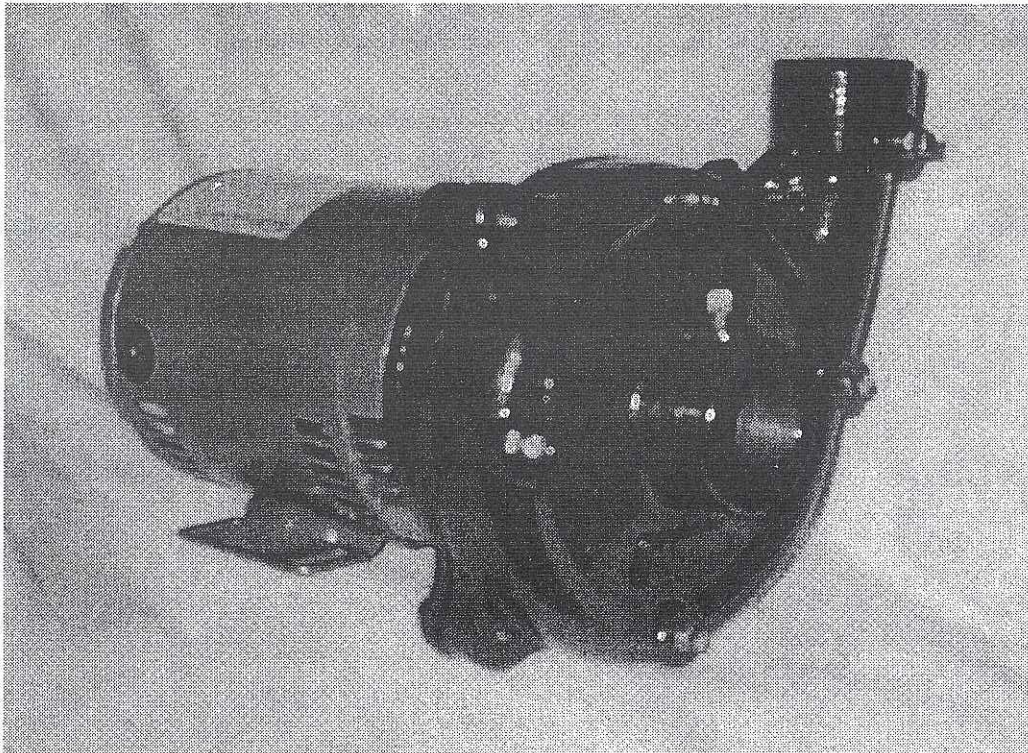


RUSSELL PUMP

Model A612

End Suction, Close Coupled, Bronze Fitted,
Centrifugal Pump



TYPICAL APPLICATIONS INCLUDE: General Purpose, OEM, Boosters,
Cooling Towers, Boiler Feed,
Process Fluids, HVAC, Irrigation,
Hot and Chilled Water
Circulation

RUSSELL PUMP AND ENGINEERING
1701 OLSON WAY MARSHALLTOWN, IA 50158
641-752-4637

DESIGN FEATURES

CASING

- Constructed as ASTM A48 class 30 cast iron. The discharge can be mounted in any 90° position. Drain and air ports are also positioned every 90°, 1/4 npt suction and discharge tappings are standard. Back pull out design allows the pump to be serviced without disturbing the piping. The volute was designed to maximize hydraulic efficiency.

MECHANICAL SEAL

- Type 21 buna-n seal is rated to 225°F and pressures to 175PSI. Carbon seal face mates with the ceramic seat providing years of trouble free service. Alternate seals available upon request.

IMPELLER

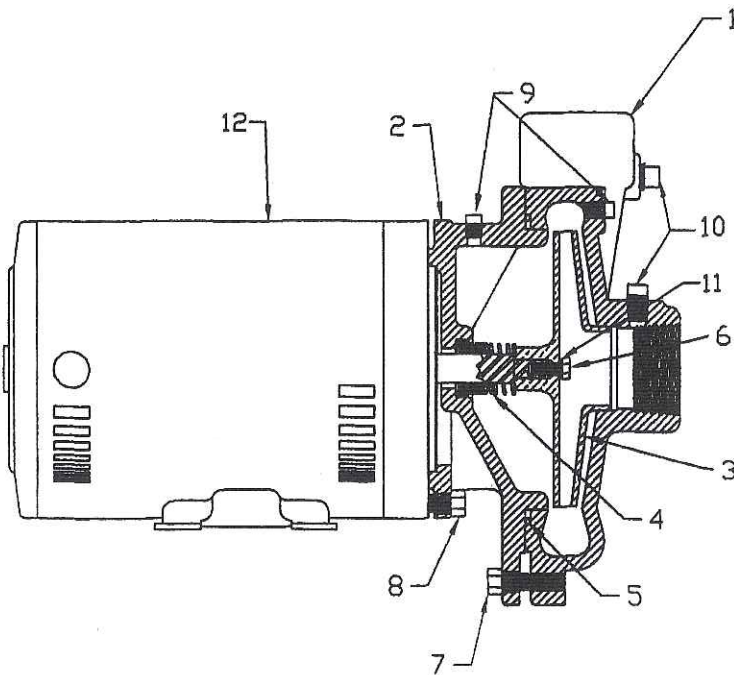
- The hydraulic design of the impeller maximizes pressure and gpm while minimizing horsepower. The enclosed impeller is made of cast bronze.

ADAPTER

- The precise machining of the adapter allows for easy assembly of the pump. A 1/8 npt hole is provided if a seal flush line is added. Construction consists of ASTM A48 class 30 cast iron.

MOTOR

- The NEMA 56J motor utilizes a 416 stainless steel shaft. The motor's heavy duty ball bearings withstand axial and radial thrust loads with no problem. Standard enclosure type is drip-proof but alternates are available.



1	CASING A612	CLASS 30 CAST IRON	40001	1
2	ADAPTER A612	CLASS 30 CAST IRON	40002	1
3	IMPELLER A612	BRONZE	20001	1
4	MECHANICAL SEAL	BUNA-N	S-100	1
		EPT	S-101	
		VITON	S-102	
5	O-RING CASING	BUNA-N	S-132	1
		EPT	S-133	
		VITON	S-134	
6	CAP SCREW	1/4-20UNC X 5/8 SS	70040	1
7	CAP SCREW	3/8-16 X 1 1/4 STEEL	19932	4
8	CAP SCREW	3/8-16 X 1 STEEL	19931	4
9	PIPE PLUG	1/8 NPT BRONZE	69845	5
10	PIPE PLUG	1/4 NPT BRONZE	68585	2
11	LOCKWASHER	1/4 303 SS	0130197	1
12	MOTOR	NEMA 56J	-	1