

Quadrant[®]

VALVE & ACTUATOR, LLC



SERIES M2-SS & M3-SS

**3-Piece Maintenance-Style
Ball Valves With
Tube Fitting Connections**

Quadrant Valve
ME B16.34/AP1 8
Class 800
920PSIG @ 100 F
400PSIG @ 400 F

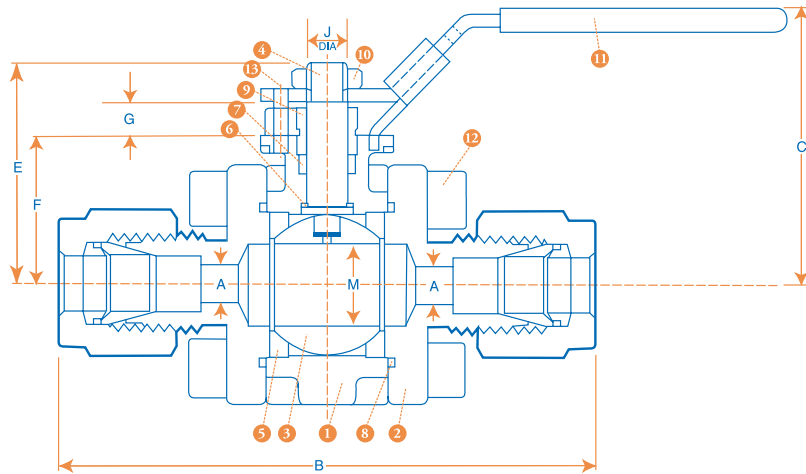
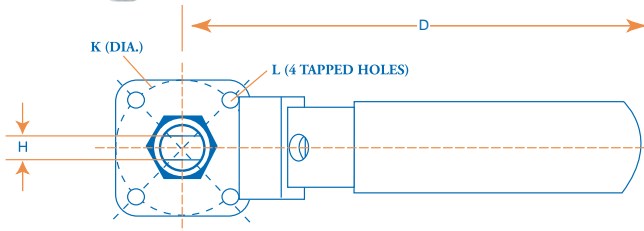


Series M2-SS ASME B16.34
Class 800 and API 608
Compliant Ball Valves with
Tube Fitting End Connections



FEATURES

- 3-Piece, 8-Bolt construction provides superior high pressure performance and ASME B16.34 compliance
- Fire safe to API 607 4th Edition & ISO 10497
- ISO 5211 4-Bolt actuator mounting pad
- API 608 compliant
- NACE MR01-75 Rev 2000 compliant
- Standard 304SS latch lock handles
- Standard ASTM A193 grade B8 stainless bolts
- TFM seats provide superior high temperature performance and chemical resistance
- PEEK seats and seals available



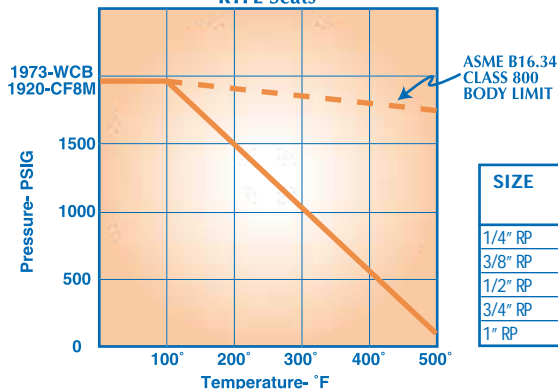
RATINGS

CF8M with 316SS Trim: 1920PSIG @ 100F
250PSIG Saturated Steam Rating

MATERIALS OF CONSTRUCTION (STD)

PART	QTY.	DESCRIPTION	STANDARD MATERIAL
1	1	BODY	ASTM A351 GR CF8M
2	2	TAILPIECE	ASTM A351 GR CF3M
3	1	BALL	ASTM A276 GR 316 OR CF8M
4	1	STEM	ASTM A276 GR 316 OR CF8M
5	2	SEAT	TFM (RTFE)
6	1	THRUST WASHER	TFM (RTFE)
7	1	PACKING SET	GRAPHITE
8	2	BODY SEAL	GRAPHITE
9	1	PACKING NUT	ASTM A276 GR 316 SS
10	1	HANDLE NUT	304SS
11	1	HANDLE ASSY	304SS
12	8	BODY BOLT	A193 B8(M2-SS)
13	1	HANDLE STOP	304SS

RTFE Seats



DIMENSIONS, WEIGHTS, CV FACTORS & MAXIMUM OPERATING TORQUE

SIZE	A (PORT)	B NO NUTS	B WITH NUTS	C	D	E	F	G	H	J	K DIA.	L	M BALL PORT	ISO PATTERN	WT. LBS.	CV	Torque RTFE IN-LBS	Torque PEEK IN-LBS
1/4" RP	0.15	2.60	3.19	2.5	4.0	1.71	1.08	.30	0.197	0.31	1.42	1/4"-20UNC	.43	F03	1.7	1.0	100	130
3/8" RP	0.24	2.60	3.19	2.5	4.0	1.71	1.08	.30	0.197	0.31	1.42	1/4"-20UNC	.43	F03	1.7	2.5	100	130
1/2" RP	0.41	3.26	4.04	2.5	4.0	1.71	1.08	.30	0.197	0.31	1.42	1/4"-20UNC	.43	F03	1.8	7.5	100	130
3/4" RP	0.57	3.26	4.04	2.6	4.0	1.83	1.24	.30	0.197	0.31	1.42	1/4"-20UNC	.57	F03	2.2	18.0	200	250
1" RP	0.81	4.39	5.36	3.0	4.8	2.34	1.50	.37	0.276	0.40	1.65	1/4"-20UNC	.81	F04	3.8	40.0	230	300

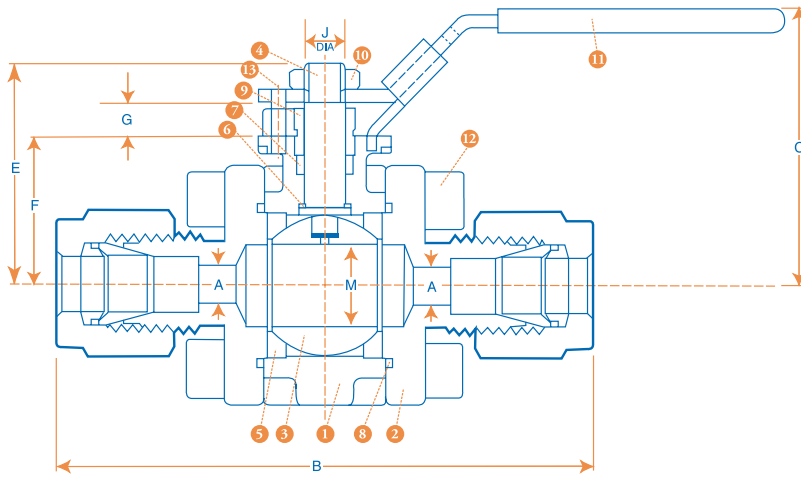
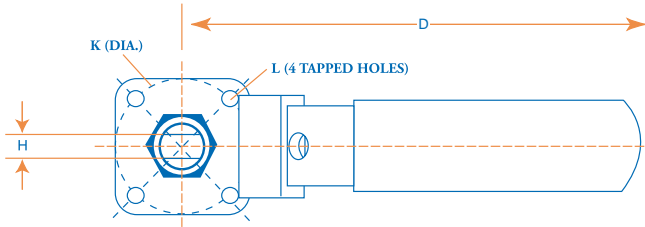


Series M3-SS Ball Valves with Tube Fitting End Connections and 3000PSIG Rating, 1/4" to 1" Sizes



FEATURES

- 3-Piece, 8-Bolt construction provides superior high pressure performance
- Fire safe to API 607 4th Edition & ISO 10497
- ISO 5211 4-Bolt actuator mounting pad
- NACE MR01-75 Rev 2000 compliant
- Standard 304SS latch lock handles
- Standard ASTM A193 grade B8 stainless bolts
- TFM seats provide superior high temperature performance and chemical resistance
- PEEK seats and seals available
- Highest working pressure ratings - 3000WOG
- Minimum 3.2 to 1 hydrostatic safety factors

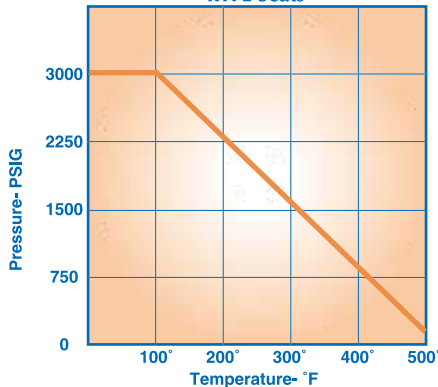


RATINGS
 CF8M with 316SS Trim: 3000PSIG @ 100F
 250PSIG Saturated Steam Rating

MATERIALS OF CONSTRUCTION (STD)

PART	QTY.	DESCRIPTION	STANDARD MATERIAL
1	1	BODY	ASTM A351 GR CF8M
2	2	TAILPIECE	ASTM A351 GR CF3M
3	1	BALL	ASTM A276 GR 316 OR CF8M
4	1	STEM	ASTM A276 GR 316 OR CF8M
5	2	SEAT	TFM (RTFE)
6	1	THRUST WASHER	TFM (RTFE)
7	1	PACKING SET	GRAPHITE
8	2	BODY SEAL	GRAPHITE
9	1	PACKING NUT	ASTM A276 GR 316 SS
10	1	HANDLE NUT	304SS
11	1	HANDLE ASSY	304SS
12	8	BODY BOLT	A193 B8
13	1	HANDLE STOP	304SS

RTFE Seats



DIMENSIONS, WEIGHTS, CV FACTORS & MAXIMUM OPERATING TORQUE

SIZE	A (PORT)	B NO NUTS	B WITH NUTS	C	D	E	F	G	H	J	K DIA	L	M BALL PORT	ISO PATTERN	WT. LBS.	CV	Torque RTFE IN-LBS	Torque PEEK IN-LBS
1/4" RP	0.19	2.60	3.19	2.5	4.0	1.71	1.08	.30	0.197	0.31	1.42	1/4"-20UNC	.43	F03	1.7	1.2	100	130
3/8" RP	0.28	2.60	3.19	2.5	4.0	1.71	1.08	.30	0.197	0.31	1.42	1/4"-20UNC	.43	F03	1.7	3.8	100	130
1/2" RP	0.41	3.26	4.04	2.5	4.0	1.71	1.08	.30	0.197	0.31	1.42	1/4"-20UNC	.43	F03	1.8	7.5	100	130
3/4" RP	0.57	3.26	4.04	2.6	4.0	1.83	1.24	.30	0.197	0.31	1.42	1/4"-20UNC	.57	F03	2.2	18.0	200	250
1" RP	0.81	4.39	5.36	3.0	4.8	2.34	1.50	.37	0.276	0.40	1.65	1/4"-20UNC	.81	F04	3.8	40.0	230	300



SERIES M2-SS & M3-SS

NUMBERING SYSTEM ... HOW TO ORDER:

M2 R S S R G SL QQ 100

SERIES	PORT SIZE	BODY & TAILPIECE MATERIAL	BALL/STEM MAT'L	SEAT MAT'L	SEAL MAT'L	HANDLE TYPE	ENDS	SIZE
M2 = ASME COMPLIANT 1920WOG M3 = 3000 WOG NON-ASME	R = REDUCED	S = STAINLESS	S = 316 STAINLESS A = ALLOY 20 H = HASTELLOY M = MONEL I = NICKEL	R = R-PTFE P = PEEK	R = R-PTFE P = PEEK G = GRAPHITE	SL = STAINLESS LATCH LOCK SO = STAINLESS OVAL LOCKING OVAL LO = STAINLESS LOCKING OVAL PA = DOUBLE ACTING PNEUMATIC SA = SPRING RETURN PNEUMATIC SR = DEADMAN HANDLE	NN = TUBE ENDS-NO NUTS OR FERRULES QQ = TUBE ENDS WITH NUTS & FERRULES NT = TUBE END x FNPT QT = TUBE END WITH NUTS & FERRULES x FNPT QW = TUBE ENDS WITH NUTS & FERRULES x SW	025 = 1/4" 038 = 3/8" 050 = 1/2" 075 = 3/4" 100 = 1"



2" Full Port M2-SS with FNPT Ends

1" Full Port M2-SS Extended Socket Weld with C-Series Actuator



Complete Range of Extended Socket Weld Tailpieces