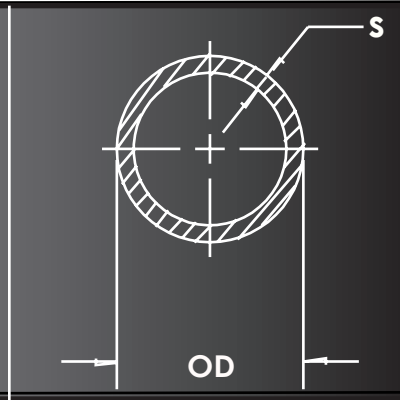
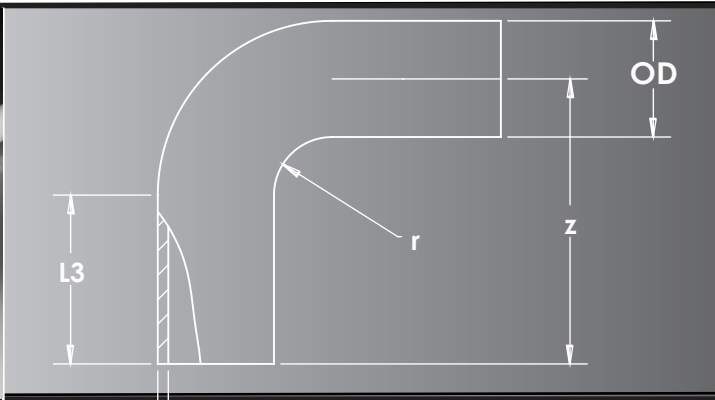


Industrial Piping Systems Dimensional Guide #UPDIM

**-Ultra Proline[®]
Halar (E-CTFE)**



**Another
Corrosion
Problem
Solved.[™]**

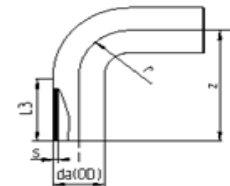
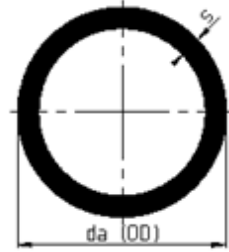


Ultra Proline® Dimensional Guide

Pipe 5 meter-16.4' length

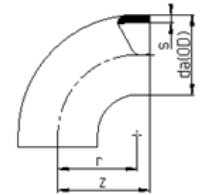
Ultra Proline®
Halar (E-CTFE)

Nominal Dimension	Dimension da (mm)	Detail	da(OD)		Asahi part#
			in	s	
1/2"	20	SDR 21	0.79	0.07	5501005
3/4"	25	SDR 21	0.99	0.07	5501007
1"	32	SDR 21	1.26	0.09	5501010
1-1/2"	50	SDR 21	1.97	0.12	5501015
2"	63	SDR 21	2.48	0.12	5501020
3"	90	SDR 21	3.55	0.17	5501030
4"	110	SDR 21	4.33	0.21	5501040



Extended Leg 90 Elbow

Nominal Dimension	Dimension da (mm)	Detail	da(OD)		z	r	L3	Asahi Part#
			in	s				
1/2"	20	SDR 21	0.79	0.07	2.01	0.79	1.30	5503005
3/4"	25	SDR 21	0.99	0.07	2.20	0.99	1.30	5503007
1"	32	SDR 21	1.26	0.09	2.48	1.26	1.30	5503010
1-1/2"	50	SDR 21	1.97	0.12	3.31	1.97	1.42	5503015
2"	63	SDR 21	2.48	0.12	3.82	2.48	1.38	5503020
3"	90	SDR 21	3.55	0.17	4.84	3.55	1.34	5503030
4"	110	SDR 21	4.33	0.21	5.59	4.33	1.34	5503040



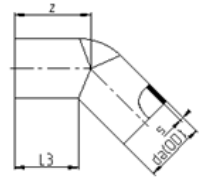
90 Elbow*

* short radius 90's being discontinued consult on availability

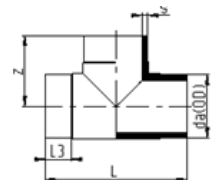
Nominal Dimension	Dimension da (mm)	Detail	da(OD)		z	r	Asahi Part#
			in	s			
1/2"	20	SDR 21	0.79	0.07	1.30	1.02	5504005
3/4"	No longer available- use extended leg 90						
1"	32	SDR 21	1.26	0.09	1.69	1.34	5504010
1-1/2"	50	SDR 21	1.97	0.12	2.32	1.97	5504015
2"	No longer available- use extended leg 90						
3"	90	SDR 21	3.55	0.17	4.06	3.59	5504030
4"	110	SDR 21	4.33	0.21	4.93	4.26	5504040

45 Elbow

Nominal Dimension	Dimension da (mm)	Detail	da(OD)	s	z	L3	Asahi Part#	
			in	in	in	in		
1/2"	20	SDR 21	0.79	0.07	1.69	1.54	5516005	
3/4"	25	SDR 21	0.99	0.07	1.77	1.58	5516007	
1"	32	SDR 21	1.26	0.09	2.05	1.81	5516010	
1-1/2"	50	SDR 21	1.97	0.12	2.60	2.21	5516015	
2"	63	SDR 21	2.48	0.12	2.96	2.44	5516020	
3"	90	*See Note below						5516030
4"	110	*See Note below						5516040



* 3" and 4" - 45's available as fabricated fittings-consult factory for dimensions and pressure rating



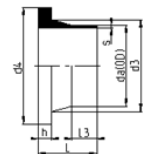
Tees

Nominal Dimension	Dimension da (mm)	Detail	da(OD)	s	z	L	L3	Asahi Part#
			in	in	in	in	in	
1/2"	20	SDR 21	0.79	0.07	1.38	2.76	0.59	5507005
3/4"	25	SDR 21	0.99	0.07	1.58	3.15	0.59	5507007
1"	32	SDR 21	1.26	0.09	1.77	3.51	0.67	5507010
1-1/2"	50	SDR 21	1.97	0.12	2.36	4.73	0.91	5507015
2"	63	SDR 21	2.48	0.12	2.96	5.87	1.10	5507020
3"	90	SDR 21	3.55	0.17	3.62	7.13	1.30	5507030
4"	110	SDR 21	4.33	0.21	4.33	8.79	1.30	5507040

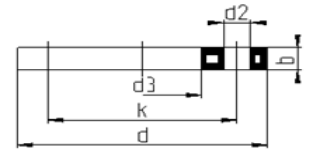
Stub End - DIN

DIN size is compatible with backing rings on next page

* Requires Backing Ring- on next page

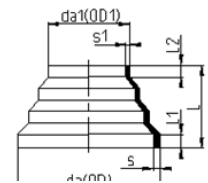


Nominal Dimension	Dimension da (mm)	Detail	da(OD)	s	L	L3	d3	d4	h	Asahi Part#
			in	in	in	in	in	in	in	
1/2"	20	SDR 21	0.79	0.07	1.97	1.22	1.06	1.77	0.24	5514005
3/4"	25	SDR 21	0.99	0.07	1.97	1.18	1.30	2.29	0.26	5514007
1"	32	SDR 21	1.26	0.09	1.97	1.02	1.58	2.68	0.28	5514010
1-1/2"	50	SDR 21	1.97	0.12	1.97	0.87	2.40	3.47	0.35	5514015
2"	63	SDR 21	2.48	0.12	1.97	0.71	2.96	4.02	0.39	5514020
3"	90	SDR 21	3.55	0.17	3.15	1.54	4.14	5.44	0.67	5514030
4"	110	SDR 21	4.33	0.21	3.15	1.50	4.93	6.23	0.47	5514040



Backing Ring ANSI 150

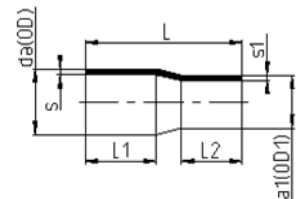
Nominal Dimension	Dimension da (mm)	Detail	da(OD)	d	d2	d3	b	k	Torque	Torque	Bolt	Asahi Part#
			in	in	in	in	in	in	Nm	in-lbs	Holes	
1/2"	20	16 bar	0.5	3.74	0.63	1.10	0.47	2.38	15	132.8	4	5046005
3/4"	25	16 bar	0.75	4.02	0.63	1.34	0.47	2.75	15	132.8	4	5046007
1"	32	16 bar	1	4.49	0.63	1.65	0.63	3.12	15	132.8	4	5046010
1-1/2"	50	16 bar	1.5	5.24	0.63	2.44	0.71	3.88	35	309.8	4	5046015
2"	63	16 bar	2	6.38	0.79	3.07	0.71	4.75	35	309.8	4	5046020
3"	90	16 bar	3	7.64	0.79	4.37	0.71	6.00	40	354.0	4	5046030
4"	110	16 bar	4	9.02	0.79	5.24	0.71	7.51	40	354.0	8	5046030



Concentric Reducer

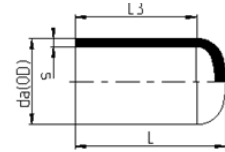
* Can be cut for intermediate sizes

Nominal Dimension	Dimension da/da1 OD mm	Detail	da(OD)	da1(OD1)	s	L	L1	L2	s1	Asahi Part#
			in	in	in	in	in	in	in	
2"x3/8"	63/16	SDR 21	2.48	0.63	0.12	2.21	0.35	0.20	0.07	5513247
4"x2"	110/63	SDR 21	4.33	2.48	0.21	2.56	0.43	0.28	0.12	5513420



Extended Leg Reducer

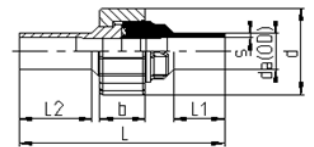
Nominal Dimension	Dimension da/da1 OD mm	Detail	da(OD)	da1(OD1)	s	L	L1	L2	s1	Asahi Part#
			in	in	in	in	in	in	in	
3/4"x1/2"	25/20	SDR 21	0.99	0.79	0.07	3.35	1.54	1.58	0.07	5510101
1"x3/4"	32/25	SDR 21	1.26	0.99	0.09	3.74	1.73	1.58	0.07	5510131
1-1/2"x3/4"	50/25	SDR 21	1.97	0.99	0.18	4.65	2.17	1.73	0.09	5510210
1-1/2"x1"	50/32	SDR 21	1.97	1.26	0.18	4.65	2.32	1.81	0.12	5510211
2"x1"	63/32	SDR 21	2.48	1.26	0.23	5.36	2.52	1.93	0.12	5510249
2"x1-1/2"	63/50	SDR 21	2.48	1.97	0.23	5.91	2.60	2.32	0.18	5510251
4"x2"	110/63	SDR 21	4.33	2.48	0.26	7.09	3.27	2.48	0.15	5510420
4"x3"	110/90	SDR 21	4.33	3.55	0.26	7.09	3.27	2.96	0.21	5510427



End Cap

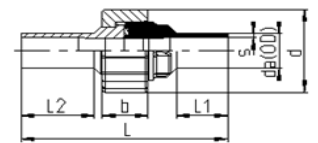
Nominal Dimension	Dimension da (OD) mm	Detail	da(OD)	s	L	L3	Asahi Part#
			in	in	in	in	
1/2"	20	SDR 21	0.79	0.07	1.77	1.62	5543005
3/4"	25	SDR 21	0.99	0.07	1.93	1.62	5543007
1"	32	SDR 21	1.26	0.09	2.21	1.77	5543010
1-1/2"	50	SDR 21	1.97	0.12	2.88	2.36	5543015
2"	63	SDR 21	2.48	0.12	3.39	2.68	5543020

Ultra Proline®
Halar (E-CTFE)



Union - FKM Rings O-Rings FDA Approved

Nominal Dimension	Dimension da (OD) mm	Detail	da(OD)	s	L	L1	L2	d	b	Asahi Part#
			in	in	in	in	in	in	in	
1/2"	20	SDR 21	0.79	0.07	4.22	0.95	1.40	1.85	0.95	5533005
3/4"	25	SDR 21	0.99	0.07	4.41	0.95	1.44	2.25	1.02	5533007
1"	32	SDR 21	1.26	0.09	4.69	0.99	1.55	2.52	1.18	5533010

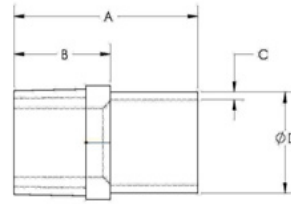


Union - FFKM O-rings - for high concentration (>97%) Sulfuric Acid use

Nominal Dimension	Dimension da (OD) mm	Detail	da(OD)	s	L	L1	L2	d	b	Asahi Part#
			in	in	in	in	in	in		
1/2"	20	SDR 21	0.79	0.07	4.22	0.95	1.40	1.85	0.95	5534005
3/4"	25	SDR 21	0.99	0.07	4.41	0.95	1.44	2.25	1.02	5534007
1"	32	SDR 21	1.26	0.09	4.69	0.99	1.55	2.52	1.18	5534010

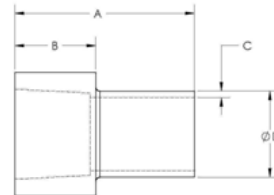
Ultra Proline® Dimensional Guide

Ultra Proline®
Halar (E-CTFE)



Male Adapter - Machined

Nominal Dimension	Dimension da (OD) mm	Dimension da (OD) in	A in	B in	C in	Asahi Part#
1/2"	20	.79"	2.35"	1.22"	0.07	5528005
3/4"	25	.99"	2.35"	1.29"	0.07	5528007
1"	32	1.26"	2.42"	1.29"	0.09	5528010
1-1/2"	50	1.97"	2.94"	1.6"	0.12	5528015
2"	63	2.48"	3.14"	1.74"	0.12	5528020

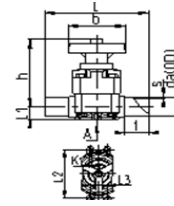


Female Adapter - Machined

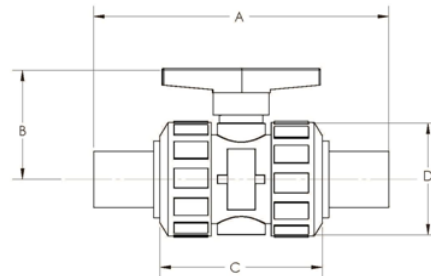
Nominal Dimension	Dimension da (OD) mm	Dimension da (OD) in	A in	B in	C in	Asahi Part#
1/2"	20	.79"	2"	.88"	0.07	5529005
3/4"	25	.99"	2"	1"	0.07	5529007
1"	32	1.26"	2.62"	1.18"	0.09	5529010
1-1/2"	50	1.97"	2.69"	1.3"	0.12	5529015
2"	63	2.48"	2.75"	1.36"	0.12	5529020

Manual Diaphragm Valves

* Air actuated options available, consult for details



Nominal Dimension	Dimension da (OD) mm	Detail	da(OD)	s	L	L1	L2	h	b	t	kv	Cv	Asahi Part#
			in	in	in	in	in	in	in	in	l/min	gpm	
1/2"	20	SDR 21	0.5	0.07	5.24	0.65	0.97	3.94	3.35	1.42	72	19.0	1440005
3/4"	25	SDR 21	0.75	0.07	5.67	0.67	0.97	3.94	3.35	1.42	93	24.6	1440007
1"	32	SDR 21	1	0.09	6.07	0.81	0.97	4.22	3.35	1.42	221	58.3	1440010
1-1/2"	50	SDR 21	1.5	0.12	7.64	1.26	1.73	5.67	5.32	1.81	500	132.0	1440015
2"	63	SDR 21	2	0.12	8.83	1.52	1.73	6.70	5.32	2.13	875	231.0	1440020



Manual Ball Valves

* Litharge-Flourine compound O-rings for aggressive media, i.e. Sodium Hypochlorite and Sulfuric Acid

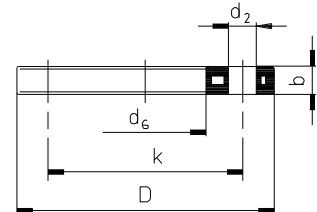
Nominal Dimension	Pipe OD (mm)	A	B	C	D	Asahi Part#
1/2"	20	5.74"	1.85"	2.83"	1.97"	1441005
3/4"	25	6.40"	2.50"	3.54"	2.40"	1441007
1"	32	6.75"	2.75"	3.87"	2.80"	1441010

Ball valves available with air or electric actuation, contact Asahi for pricing

Ball valves should be drilled and deburred when used with Sodium Hypochlorite, to allow off gassing when in the closed position.

Proline 150 PP Blind Flange

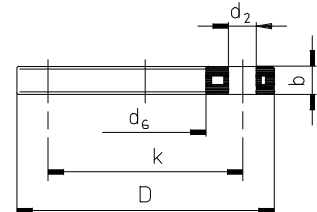
- with Steel Insert
- Molded



OD		Dimensions					up to a pressure rate of 16 bar acc. DIN 16962 part5			
[mm]	[inch]	D	k	d ₂	b	Bolt Holes	Torque [ft/lbs]	Agru Code	Asahi Part #	Weight (lbs)
20	½"	3.740	2 3/8"	5/8"	0.472	4	11	11.043.0020.11	5042005	0.49
25	¾"	4.016	2 3/4"	5/8"	0.472	4	11	11.043.0025.11	5042007	0.62
32	1"	4.488	3 1/8"	5/8"	0.630	4	11	11.043.0032.11	5042010	0.93
40	1¼"	5.118	3 1/2"	5/8"	0.630	4	18	11.043.0040.11	5042012	1.12
50	1½"	5.236	3 7/8"	5/8"	0.709	4	26	11.043.0050.11	5042015	1.32
63	2"	6.378	4 7/8"	3/4"	0.709	4	26	11.043.0063.11	5042020	1.92
75	2½"	7.244	5 1/2"	3/4"	0.709	4	30	11.043.0075.11	5042025	2.29
90	3"	7.638	6"	3/4"	0.709	4	30	11.043.0090.11	5042030	2.43
110	4"	9.016	7 1/2"	3/4"	0.709	8	30	11.043.0110.11	5042040	3.57
160	6"	11.142	9 1/2"	7/8"	0.945	8	44	11.043.0160.11	5042060	5.47
200	8"	13.583	11 3/4"	7/8"	0.945	8	52	11.043.0200.11	5042080	7.80
250	10"	16.220	14 1/4"	1"	1.063	12	74	11.043.0250.11	5042100	14.18
315	12"	19.173	17"	1"	1.260	12	81	11.043.0315.11	5042120	27.87

Proline 150 PP Backing Ring

- with Steel Insert
- Molded



OD		Dimensions					up to a pressure rate of 16 bar acc. DIN 16962 part5				
[mm]	[inch]	D	k	d ₆	d ₂	b	Bolt Holes	Torque [ft/lbs]	Agro Code	Asahi Part #	Weight (lbs)
20	½"	3.740	2 3/8"	1.102	5/8"	0.472	4	11	11.013.0020.11	5046005	0.49
25	¾"	4.016	2 3/4"	1.339	5/8"	0.472	4	11	11.013.0025.11	5046007	0.62
32	1"	4.488	3 1/8"	1.654	5/8"	0.630	4	11	11.013.0032.11	5046010	0.93
40	1¼"	5.118	3 1/2"	2.008	5/8"	0.630	4	18	11.013.0040.11	5046012	1.12
50	1½"	5.236	3 7/8"	2.441	5/8"	0.709	4	26	11.013.0050.11	5046015	1.32
63	2"	6.378	4 7/8"	3.071	3/4"	0.709	4	26	11.013.0063.11	5046020	1.92
75	2½"	7.244	5 1/2"	3.622	3/4"	0.709	4	30	11.013.0075.11	5046025	2.29
90	3"	7.638	6"	4.370	3/4"	0.709	4	30	11.013.0090.11	5046030	2.43
110	4"	9.016	7 1/2"	5.236	3/4"	0.709	8	30	11.013.0110.11	5046040	3.57
160	6"	11.142	9 1/2"	7.008	7/8"	0.945	8	44	11.013.0160.11	5046060	5.47
200	8"	13.583	11 3/4"	9.291	7/8"	0.945	8	52	11.013.0200.11	5046080	7.80
250	10"	16.220	14 1/4"	11.339	1"	1.063	12	74	11.013.0250.11	5046100	14.18
315	12"	19.173	17"	13.307	1"	1.260	12	81	11.013.0315.11	5046120	27.87

225mm (9") AND 200mm (8") Stub Ends use 8" ANSI Backing Ring.
Consult factory for Backing Ring Details larger than 12".

Another Corrosion Problem Solved.TM



35 Green St., Malden, MA 02148

Tel: 800-343-3618; 781-321-5409

**Direct Sales: East (800) 232-7244
Central (800) 442-7244
West (800) 282-7244**

Fax: 800-426-7058

www.asahi-america.com

asahi@asahi-america.com
