



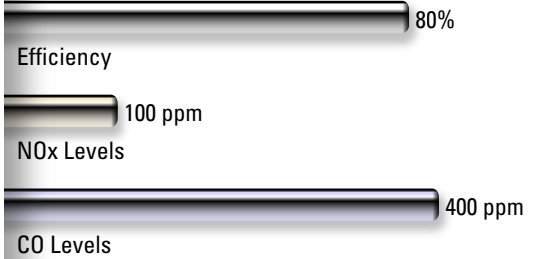
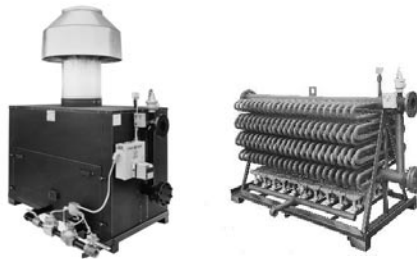
# PARKER HOT WATER BOILER SUMMARY

Sizes, Efficiency, NOx and CO Levels  
For Closed System Heating  
Temperatures to 400°F, Pressures to 300 PSI

## 201

### Atmospheric "T" Model Direct Fired Hot Water Boiler

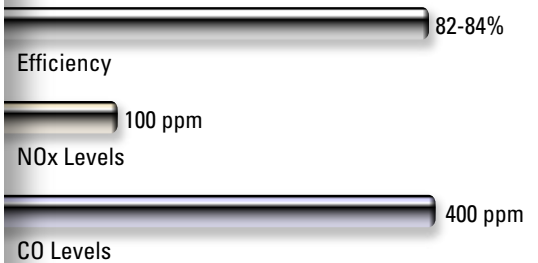
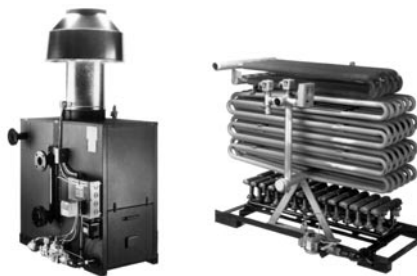
Units available from  
300,000- 6,800,000 BTU input



## 201R with Internal Reclaimer

### Atmospheric "T-R" Model High Efficiency, Direct Fired Hot Water Boiler

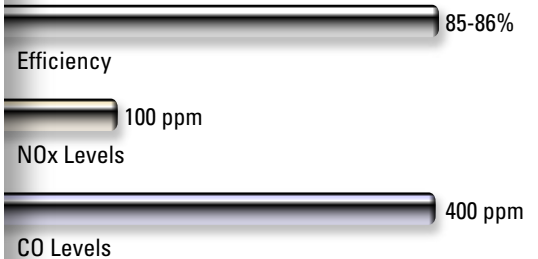
Units available from  
300,000- 6,800,000 BTU input



## 201R with External Reclaimer

### Atmospheric "T-R" Model High Efficiency, Direct Fired Hot Water Boiler

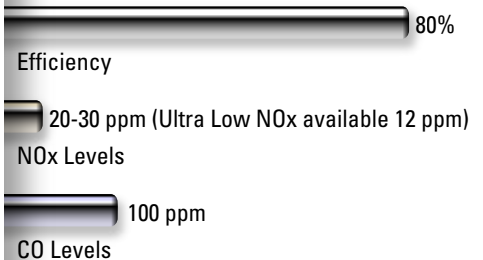
Units available from  
300,000- 6,800,000 BTU input



## 201L

### Atmospheric "T-L" Model Low NOx, Premix Burner, Direct Fired Hot Water Boiler

Units available from  
300,000- 6,300,000 BTU input



For open systems or low temperature heating, use Parker Indirect Fired Water Heaters 210 Series.  
Ratings and emission levels given are nominal and may vary based on job conditions.  
CO values given are maximum. Normally, much lower values are obtained.

**PARKER BOILER CO.**  
5930 Bandini Boulevard  
Los Angeles, CA 90040  
Tel (323) 727-9800  
Fax (323) 722-2848  
www.parkerboiler.com

BROCHURE Hot Water Summary 013

**"Never a Compromise for Quality or Safety"**



# PARKER HOT WATER BOILER SUMMARY

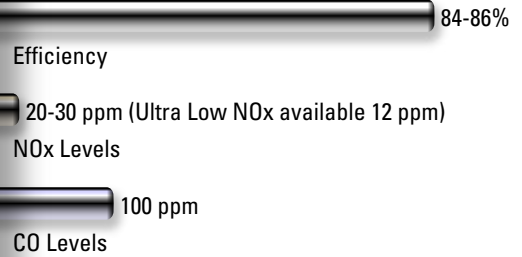
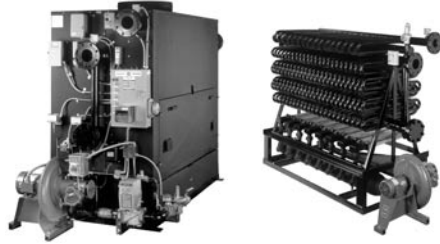
Sizes, Efficiency, NOx and CO Levels  
For Closed System Heating  
Temperatures to 400°F, Pressures to 300 PSI



## 201LR with Internal Reclaimer "T-LR" Model

Low NOx, High Efficiency,  
Premix Burner,  
Direct Fired Hot Water Boiler

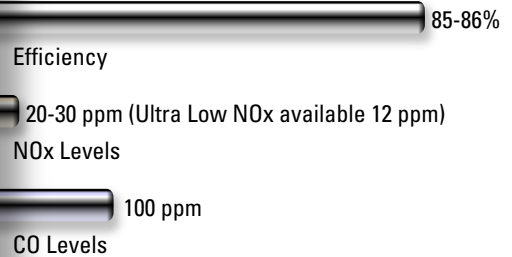
Units available from  
300,000- 6,300,000 BTU input



## 201LR with External Reclaimer "T-LR" Model

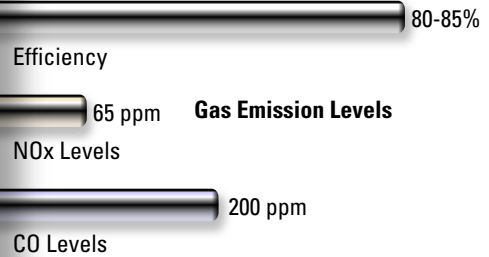
Low NOx, High Efficiency,  
Premix Burner,  
Direct Fired Hot Water Boiler

Units available from  
300,000- 6,300,000 BTU input



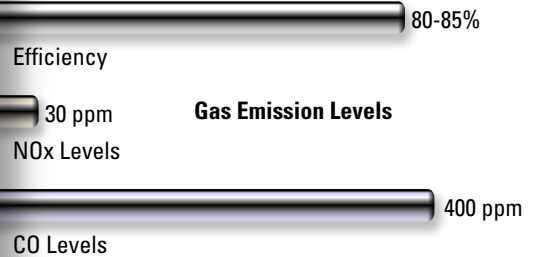
## 203-5 Power Burner Hot Water Boiler Gas (G), Oil (O), or Gas/Oil (G/O) Fuels

Units available from  
432,000- 6,250,000 BTU input



## 203-5 Power Burner Hot Water Boiler Gas (G), Oil (O), or Gas/Oil (G/O) Fuels Low NOx Firing w/FGR

Units available from  
1,000,000- 6,250,000 BTU input



For open systems or low temperature heating, use Parker Indirect Fired Water Heaters 210 Series.  
Ratings and emission levels given are nominal and may vary based on job conditions.  
CO values given are maximum. Normally, much lower values are obtained.



**"Never a Compromise for Quality or Safety"**

**PARKER BOILER CO.**  
5930 Bandini Boulevard  
Los Angeles, CA 90040  
Tel (323) 727-9800  
Fax (323) 722-2848  
www.parkerboiler.com

BROCHURE Hot Water Summary 013

Parker Hot Water Boiler Summary