



# WATER WALL HOT WATER BOILER LOW NO<sub>x</sub> METAL FIBER BURNER

G---R(L) Models, Bent Steel Water Tube  
672,000 - 3,120,000 BTUH Gas Fired

## THE PARKER DESIGN

The Parker water tube design offers an extremely efficient, reliable hot water boiler built for the long term with ease of maintenance. The Parker design offers many advantages. Compare ours to the competition.

## ADVANTAGES

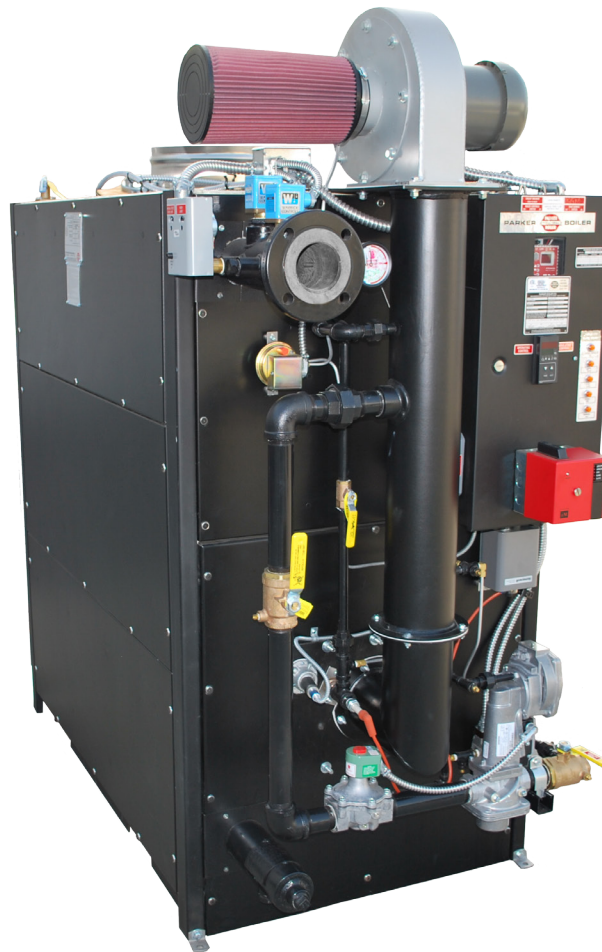
- Sealed combustion chamber offers efficiencies to 86% with low excess air levels.
- Less heat loss due to Water Wall sealed combustion chamber design.
- SCAQMD Certified for less than 20ppm NO<sub>x</sub>
- Variable speed blower for electrical energy savings.
- LOW NO<sub>x</sub> heavy duty Metal Fiber Burner.
- Qualifies for Type "B" Conventional Venting
- Flexible tubes, no thermal shock problems.
- Extra heavy boiler tubes 1-5/16" OD, minimum 0.12" (11GA) heavy thickness steel, built for long term service life.
- Welded tube bundle. No rolled, ferrell fit, or gasket type connections.
- Units can go through a 35" door.
- Modular cabinet construction.
- Lighter weight.

## Safety

Our ASME tube bundle is extremely flexible and offers a long life with a 25 year warranty against thermal shock. No Parker Boiler has ever been known to experience an internal explosion.

## PARKER BOILER CO.

5930 Bandini Boulevard  
Los Angeles, CA 90040  
Tel (323) 727-9800  
Fax (323) 722-2848  
www.parkerboiler.com  
BROCHURE 204L 0J9



204WW Direct Fired Hot  
Water Wall Boiler

Temperatures to 380°F  
Pressures to 200 PSI



SCAQMD  
Certified to 1146.2

## Heavy Insulated Cabinet

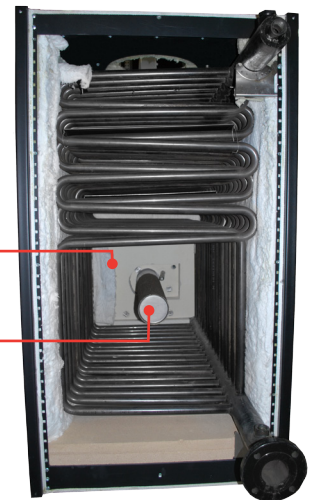
The cabinet is durably constructed with heavy steel, insulated with high temperature thermal fiber insulation to effectively reduce heat losses to a minimum

## Codes / Approvals

All Parker Hot Water Boilers are manufactured in accordance with the ASME Heating & Power Boiler Codes, registered with the National Board of Boiler and Pressure Vessel inspectors. The boiler burner and controls are prewired, factory tested and Listed by a Nationally Recognized Testing Laboratory as Gas Fired Boiler Assemblies to UL Standard 795 & CAN/CGA STD 1-3.1

Water Wall  
Furnace

Metal Fiber  
Burner



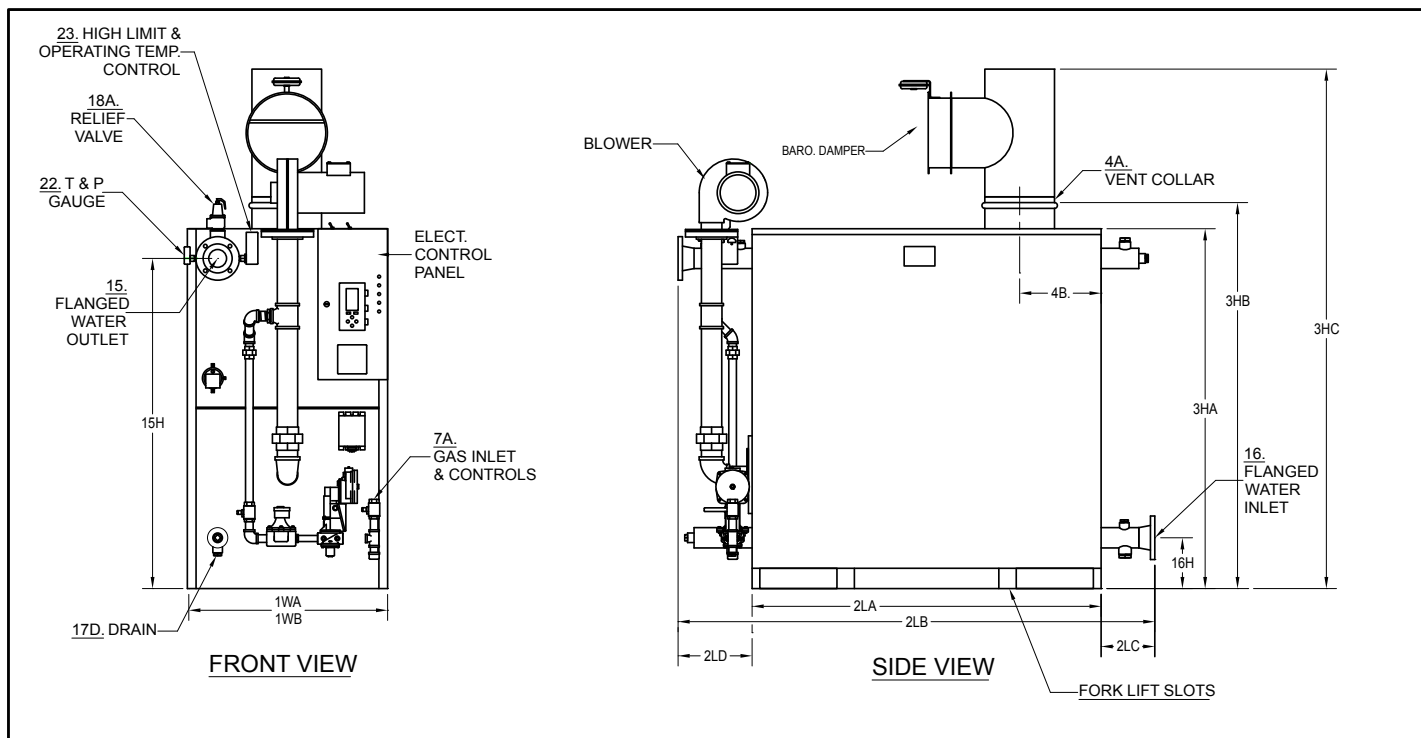
## Low Cost Operation

The staggered tubing design provides a 10-pass self-baffled heating surface to increase efficiency

**"Never a Compromise for Quality or Safety"**



**PARKER BOILER WATER WALL HOT WATER BOILERS** SPEC. SHEET D-204WW-R(L)  
**LOW NO<sub>x</sub> FIRED** OJ9  
**MODELS G672R(L) TO G3120R(L)**



NO.	ITEM	MODEL NO.	G672R(L)	G1008R(L)	G1536R(L)	G2304R(L)	G2640R(L)	G3120R(L)
A	BTU Input	1000's BTU/HR.	672	1008	1536	2000	2640	3120
B	BTU Output	1000's BTU/HR.	551	827	1260	1640	2165	2559
C	Heating Surface	SQ. FT.	93	140	187	234	294	358
1WA	Width of Cabinet	IN.	35	35	35	35	35	35
1WB	Width Overall including controls (controls can be removed)	IN.	39	39	39	39	39	39
2LA	Length of Cabinet	IN.	32	47	56	68	83	101
2LB	Length Overall	IN.	54-1/2	67-1/2	78-1/2	90	106	123-1/2
2LC	Length of Back Beyond Cabinet	IN.	9-1/2	7-1/2	9-1/2	9	9	8-1/2
2LD	Length of Front Beyond Cabinet	IN.	13	13	13	13	14	14
3HA	Height of Cabinet	IN.	62	62	62	62	62	62
3HB	Height with Vent Collar	IN.	66-1/2	66-1/2	66-1/2	66-1/2	66-1/2	66-1/2
3HC	Height Overall Including Barometric Damper	IN.	81	84	88	90	92	96
4A.	Vent Collar Diameter	IN.	8	10	12	14	16	18
4B.	Vent Stack Location - From Rear of Boiler Cabinet	IN.	12	17-1/2	18-1/2	23	26	30
7A	Std. Nat. Gas Inlet Size, @ Inlet Supply Pressure; Min: 7" W.C.; Max: 14" W.C.	IN.	1	1	1-1/2	1-1/2	2	2
7B	Hi Pressure Natural Gas or LP Gas Inlet Size, Supply Pressure 1-5 PSI	IN.	1	1	1-1/2	1-1/2	1-1/2	2
15 & 16	Hot Water Inlet & Outlet Size (CL. 150 Flanged)	IN.	3	3	3	3	3	3
15H	Hot Water Outlet Height from Floor	IN.	57	57	57	57	57	57
16H	Water Inlet height from Floor	IN.	8-3/4	8-3/4	8-3/4	8-3/4	8-3/4	8-3/4
17D	Drain Line Size Required	IN.	1	1	1	1	1	1
18AHP	Safety Relief Valve Size - 125 PSI (H-STAMP)	OUTLET IN.	3/4	3/4	1	1	1	1-1/4
18ALP	Safety Relief Valve Size - 30 PSI (H-STAMP)	OUTLET IN.	1	1-1/2	2	2	2-1/2	2-1/2
20A	POWER SPECIFICATIONS	VOLTAGE/PH	115V/1PH				230V/3PH	
20B	Controls ( 115V-1Ph-60Hz)	AMPS	5 AMPS					
21	Blower HP	HP	1/2	1/2	1	1	2	3
22	Pump HP for "S" Coil on 9PPM units - 115V Service	HP	1/2					
	Water Capacity	GAL.	16	22	29	35	43	56
	Net Weight of Boiler	LBS.	1440	1685	2015	2350	2800	3600
	Crated Shipping Weight of Boiler- Approximate	LBS.	1640	1935	2290	2650	3130	4000

Recommended Clearances for Access: Inspection Doors 18"; Controls 24"; Electrical Panel 30"; 3Ph (36") ; Additional space may be required by Local Codes.

Notes: Due to continuous improvement, specifications are subject to change without notice.

D-204WW-R(L) DWG



**"Never a Compromise for Quality or Safety"**

**PARKER BOILER CO.**  
 5930 Bandini Boulevard  
 Los Angeles, CA 90040  
 Tel (323) 727-9800  
 Fax (323) 722-2848  
 www.parkerboiler.com  
 BROCHURE 204L OJ9