

# PARKER HEAT RECLAIMER INSTALLATION DRAWING AND CIRCULATING FLOW DIAGRAM

NOTES: 1) HEAT RECLAIMER MUST HAVE A MIN. ENT. WATER TEMP OF 105°F. IF NOT, A TEMPERING VALVE MUST BE INSTALLED ON RECLAIMER.

2) LINE SIZES FOR RECLAIMER SHOULD BE 3/4" FOR EM8-12, 1" FOR EM14-28

\*=FURNISHED WITH PARKER KIT

\*\*=FURNISHED WITH PARKER ACCESSORY KIT

ITEMS W/O "\*" OR "\*\*" ARE NOT FURNISHED

STACK ADAPTERS WHEN REQUIRED ARE FURNISHED STANDARD W/KIT

PIPE ALL SAFETY VALVES TO SAFE POINT OF DISCHARGE

UNION TEE CHECK VALVE

FLOW WHEN SYSTEM IS IN OPERATION

SHUT OFF VALVE

TEMPERATURE GAUGE STACK THERMOMETER

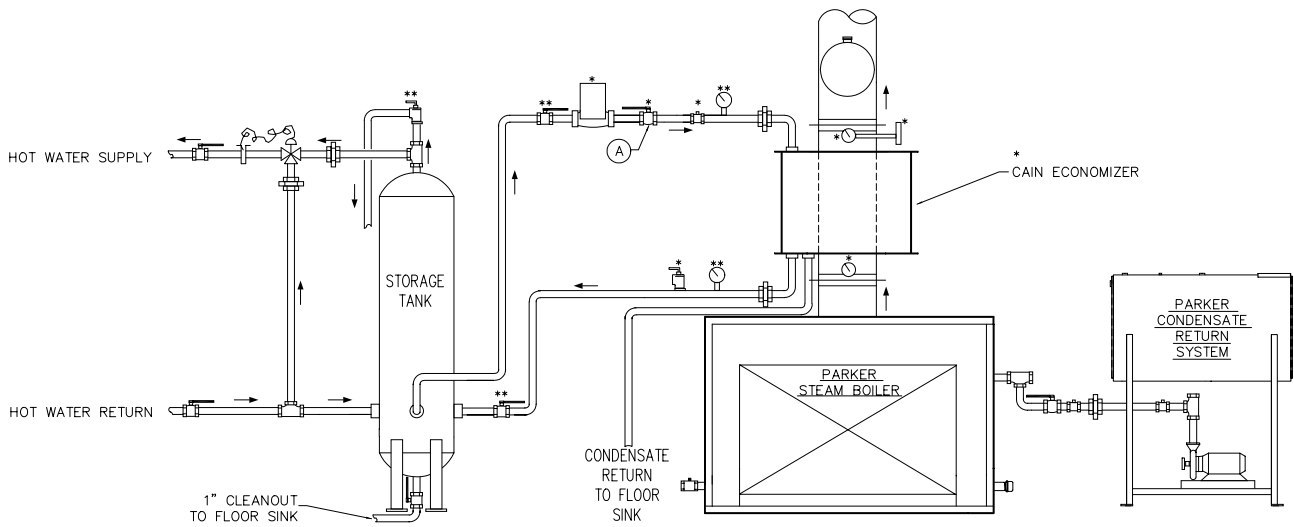
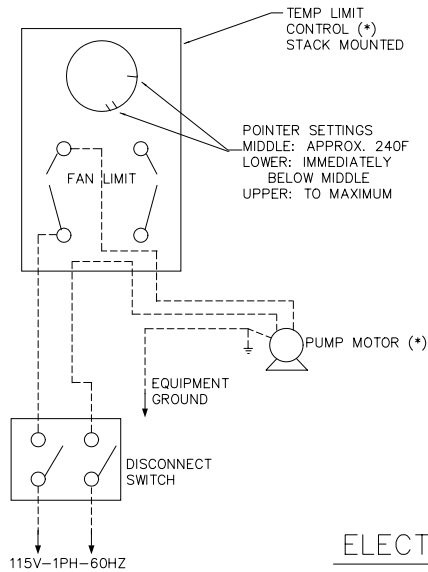
CIRCULATING PUMP

RELIEF VALVE, (PIPED TO SAFE POINT OF DISCHARGE)

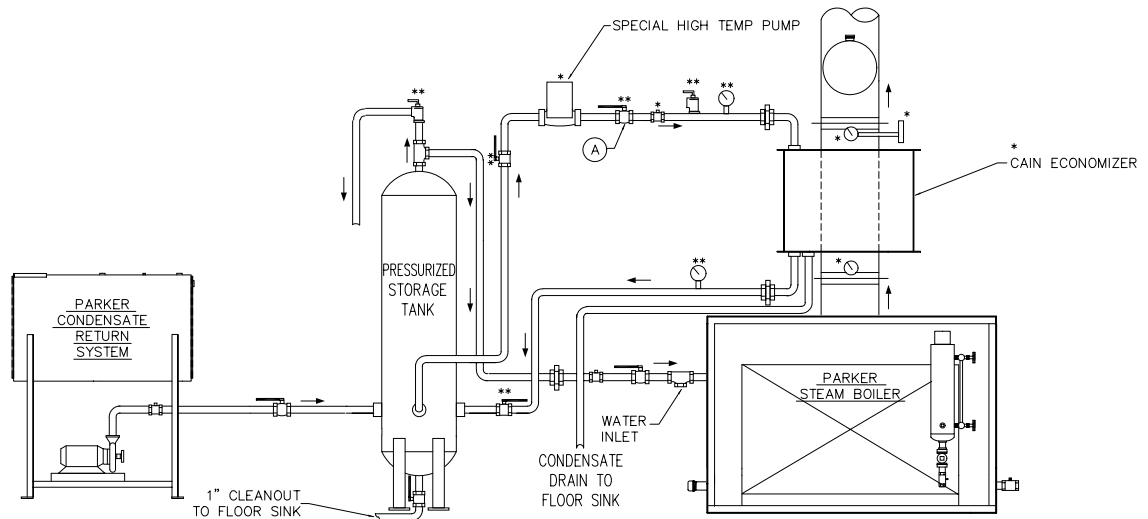
TEMPERING VALVE & CAPILLARY

CIRCULATING PUMP CONTROL

(A) - CAN ALSO BE USED AS CONTROL FLOW VALVE (NF)



STEAM BOILER WITH HOT WATER STORAGE TANK  
(RECOMMENDED FOR STEADY OR CONTINUOUS HOT WATER LOADS)



STEAM BOILER W/PRESSURIZED TANK FOR BOILER WATER PREHEAT

# PARKER HEAT RECLAIMER INSTALLATION DRAWING AND CIRCULATING FLOW DIAGRAM

NOTES: 1) HEAT RECLAIMER MUST HAVE A MIN. ENT. WATER TEMP OF 105°F. IF NOT, A TEMPERING VALVE MUST BE INSTALLED ON RECLAIMER.

2) LINE SIZES FOR RECLAIMER SHOULD BE 3/4" FOR EM8-12, 1" FOR EM16-28

\*=FURNISHED WITH PARKER KIT  
\*\*=FURNISHED WITH PARKER ACCESSORY KIT

ITEMS W/O "\*" OR "\*\*" ARE NOT FURNISHED

STACK ADAPTERS WHEN REQUIRED ARE FURNISHED STANDARD W/KIT

PIPE ALL SAFETY VALVES TO SAFE POINT OF DISCHARGE

UNION TEE CHECK VALVE

FLOW WHEN SYSTEM IS IN OPERATION

SHUT OFF VALVE OR BALANCING VALVE

TEMPERATURE GAUGE STACK THERMOMETER

CIRCULATING PUMP

RELIEF VALVE, (PIPED TO SAFE POINT OF DISCHARGE)

TEMPERING VALVE & CAPILLARY

CIRCULATING PUMP CONTROL

(A) - CAN ALSO BE USED AS CONTROL FLOW VALVE (NF)

CF = CONSULT FACTORY

