

PACKAGED AUTOMATIC BOILER FEEDWATER RETURN SYSTEM

For Steam Boilers 1 1/2 to 300 HP 15-250 PSI

THE PARKER DESIGN

The Parker Automatic Return System provides a quality, heavy duty packaged unit fully assembled and ready to install. The system consists of a durable tank with automatic water make-up valve, suction stop valve, strainer, discharge check valve and heavy duty boiler feed pump with motor.

ADVANTAGES

Float valve above top of tank with air gap eliminates expensive backflow device.

Heavy 3/16" thick steel tank with protective coating and painted with a durable, baked enamel finish.

Adequate storage capacity and convenient openings for easy installation.

Mounted and assembled with complete trim for easy, inexpensive installation.

Solid heavy steel, all welded construction and frame for extra strength and protection against vibration.

Automatic float valve assembly, accessible and adjustable.

Tank is easy to clean and provides convenient drain and clean out openings.

Heavy duty pumps with mechanical seal eliminate troublesome leakage and packing and provide reliable and long life service.

Return Systems



R7 to R10, 70 to 300 HP



R5 and R6, 30 to 50 HP

Burks Turbine Pumps feature external impeller adjustment without disturbing piping, disassembling piping or replacing parts. Gives up to 40% longer service life than turbine pumps of other designs.

Return Systems for boilers 70 to 150 HP furnished with dual pumps each of sufficient capacity to supply the required feed water to the boiler.

Optional models available with non-electric feedwater pre-heater, electric water fill system, motor starters, disconnects, anodes, stainless steel, 1/4" thick carbon steel pump relief valve, Grundfos Multistage Centrifical, and MTH turbine pumps and electrical panels.

The return system is standardly recommended with high pressure steam boilers to supply water with a boiler feed pump that operates on demand from the boiler water level control.

The tank provides storage for water make-up and return condensate from the system when available with the advantage of pre-heated water. The tank is also used for convenience of feeding water treatment to the boiler.



R1 to R4,
1 1/2 to 25 HP

PARKER

BOILER CO.

NEVER A COMPROMISE FOR QUALITY OR SAFETY

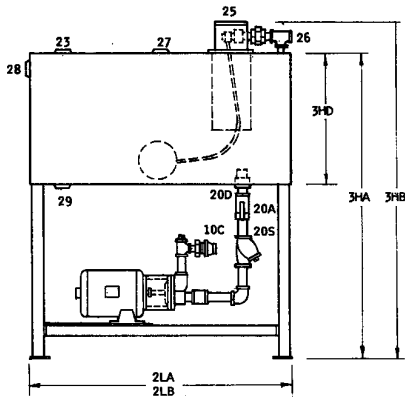
5930 Bandini Boulevard
Los Angeles CA 90040
Fax (323) 722-2848
www.parkerboiler.com

Phone (323) 727-9800

BROCHURE 106 000

PACKAGED AUTOMATIC BOILER FEEDWATER RETURN SYSTEM

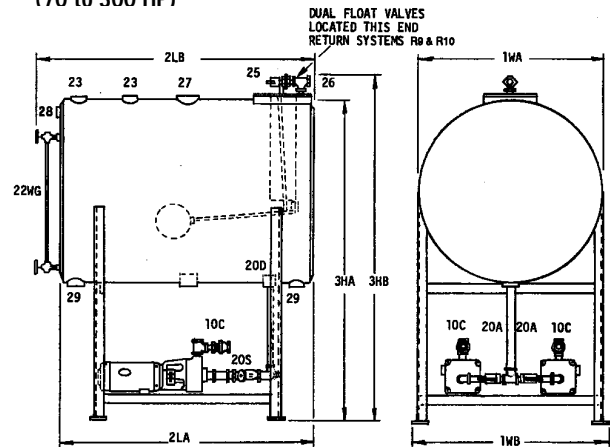
For Steam Boilers 1 1/2 to 300 HP 15-250 PSI



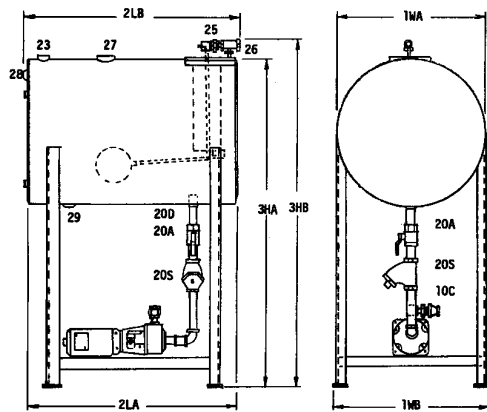
Return System
R1 to R4
(1 1/2 to 25 HP)

20D
RETURN
SYSTEM
R1 ONLY

Return System
R7 to R10
(70 to 300 HP)



DUAL FLOAT VALVES
LOCATED THIS END
RETURN SYSTEMS R9 & R10



Return System
R5 to R6
(30 to 50 HP)

NO.	ITEM	HP	RETURN SYSTEM NUMBER							
			R1	R3	R4	R5-6	R7	R8	R9	R10
	BOILER SIZE, MAXIMUM	HP	3 HP	16 HP	25 HP	50 HP	70 HP	100 HP	150 HP	300 HP
	TANK MODEL		ORR1020	ORR1036	ORR1336	WRH3036	WRH3648	WRH3660	WRH4260	WRH4896
1WA	WIDTH	IN.	10	10	13	30	36	36	42	48
1WB	WIDTH OVERALL	IN.	10	10	13	32	38	38	44	50
2LA	LENGTH	IN.	20	36	36	36	48	60	60	96
2LB	LENGTH OVERALL	IN.	28	36	36	38	53	65	65	101
3HA	HEIGHT	IN.	35	42	46	58	63	63	69	72
3HB	HEIGHT OVERALL	IN.	38	45	49	62	67	67	73	76
3HD	DEPTH	IN.	12	18	24					
10C	DISCHARGE CHECK VALVE	IN.	1/2	3/4	3/4	1	(2) 1	(2) 1	(2) 1-1/4	
20	SUCT. STOP VALVE & STRAINER	IN.	1	1	1	1-1/4*	(2) 1-1/4*	(2) 1-1/4*	(2) 1-1/2	
20D	TANK PUMP CONNECTION	IN.	1	1	1	2	(2) 2	(2) 2	(2) 2	(4) 2
22WG	WATER GAUGE GLASS (1/2" FIXTURES)	IN.	NF	NF	NF	NF	5/8 X 24	5/8 X 24	5/8 X 24	5/8 X 30
23	CONDENSATE RETURN	IN.	3/4	1-1/2	1-1/2	2	(2) 2	(2) 2	(2) 2	(2) 2
25	FLOAT VALVE	IN.	1/2	1/2	1/2	3/4	3/4	3/4	(2) 3/4	(2) 3/4
26	WATER INLET	IN.	1/2	1/2	1/2	3/4	3/4	3/4	(2) 3/4	(2) 3/4
27	VENT OUTLET	IN.	1-1/2	2	2	2-1/2	3	3	3	3
28	RETURN TANK OVERFLOW	IN.	1	1	1-1/4	1-1/4	1-1/4	2	2	2
29	RETURN TANK DRAIN	IN.	1-1/2	1-1/2	1-1/2	1-1/2	(2) 2	(2) 2	(2) 2	(2) 2
	FULL TANK WATER CAPACITY	GAL.	11	28	49	110	211	264	360	750
	WEIGHT-LESS PUMP & FIT.	LBS.	87	160	210	365	580	660	815	1325
	WEIGHT-WITH PUMP & FIT. APRX	LBS.	132	205	265	440	710	790	1000	1695
	CRATED SHIPPING WEIGHT APRX.	LBS.	185	290	355	540	850	940	1250	2000

* 1 1/2" SIZE FURNISHED WITH 5G5-1.25TI CENTRIFUGAL PUMP

* 1- 1/2 size furnished with 5G5-1.25TI centrifugal pump

5930 Bandini Boulevard
Los Angeles CA 90040
Fax (323) 722-2848
www.parkerboiler.com

Phone (323) 727-9800

BROCHURE 106 000



106 Feedwater Return Steam Boilers 1-1/2 - 300 HP