

**WM SERIES  
MECHANICAL TOTALIZER**



Flow  
Pressure  
Level  
Temperature  
measurement  
monitoring  
control



- **Simple Economical Water Flow Totalizing**
- **1/2" and 3/4" Sizes**
- **Rotatable Indicator**
- **8 Digit Registration with 1/10th Gallon Sweep**
- **Rugged Bronze Body**



**USA**

KOBOLD Instruments Inc.  
1801 Parkway View Drive  
USA-Pittsburgh, PA 15205  
☎ +1 412-788-2830  
☎ +1 412-788-4890  
E-mail: info@koboldusa.com



**CANADA**

KOBOLD Instruments Canada Inc.  
9A Aviation  
Pointe-Claire, QC H9R 4Z2  
☎ +1 514-428-8090  
☎ +1 514-428-8899  
E-mail: kobold@kobold.ca

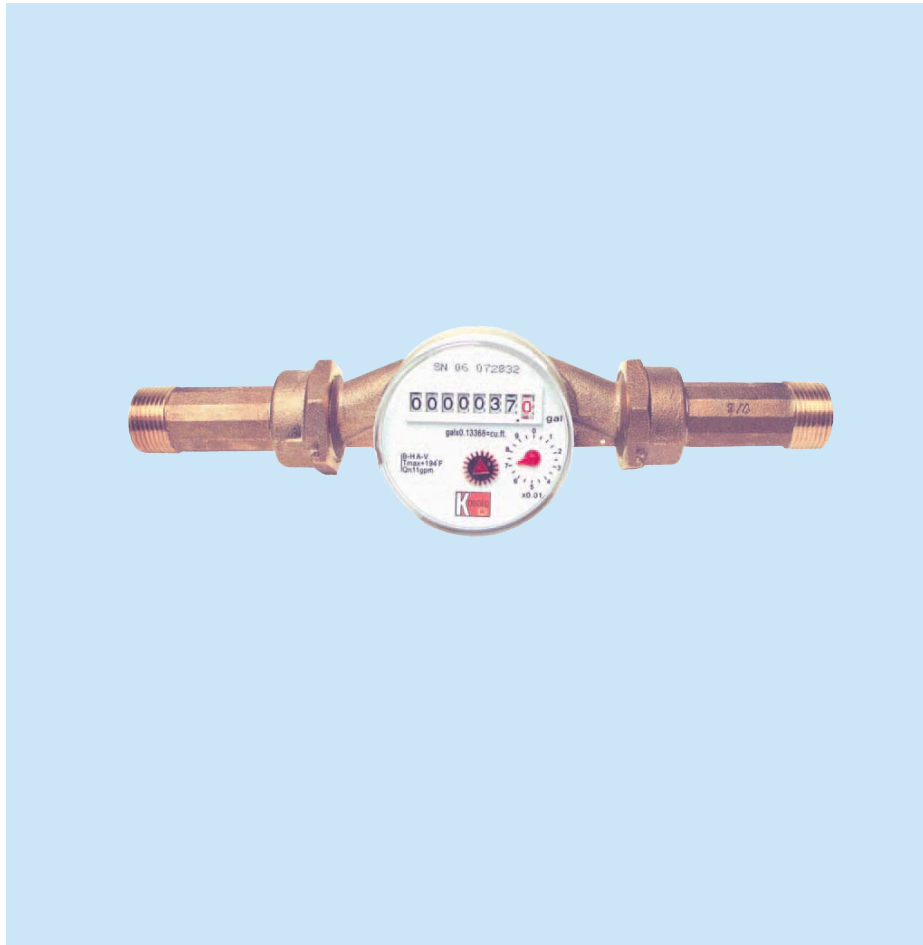
Visit KOBOLD Online at  
[www.kobold.com](http://www.kobold.com)

Model:  
WM

**Features**

- Simple Economical Water Flow Totalizing
- 1/2" and 3/4" Sizes
- Rotatable Indicator
- 8 Digit Registration with 1/10th Gallon Sweep
- Rugged Bronze Body

The KOBOLD WM series is a single jet, dry type, totalizing water meter. It is an ideal choice for a range of sub-metering applications such as apartment buildings, RV parks and marinas. They can also be used in industrial applications when water usage must be monitored for meeting environmental and regulatory requirements. The meters feature a rugged bronze body with a magnetically linked dry indicator. The totalizer is a non resettable "odometer" type with 8 digit registration and a sweep hand to measure in 1/10th gallon increments. The WM series has a male NPS (parallel) thread with gasket seal. NPS to NPT adapter fittings are included. Meters are constructed in conformance with AWWA C712-02 and ANSI/NSF 61.



**Specifications**

**Measuring Principle:** Single jet with magnetic coupling between rotor and meter movement

**Meter Sizes:** 1/2" and 3/4"

**Maximum Water Temp:** 194°F

**Accuracy**

**At Nominal Flow (see ordering table):** +/-1.5%

**At Minimal Flow (see ordering table):** -5%, +1.5%

**DP at Max. Flow:** 15 PSI

**Materials of Construction**

**Meter Body:** Copper alloy UNS C83600

**Register Box Rings:** Copper alloy UNS C85700

**Register Cover:** Polycarbonate

**Rotor Spindles:** 304 SS

**Register Gears:** Acetal

**Native Fittings**

**WM-5015:** 3/4" NPS male w/ gasket

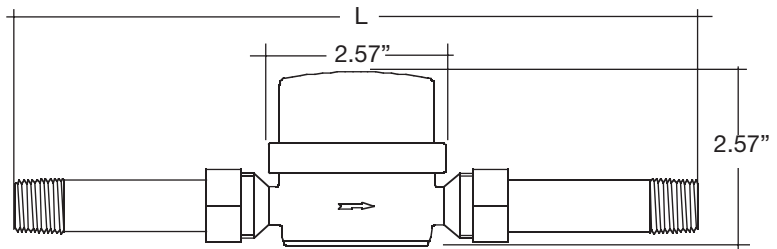
**WM-5020:** 1" NPS male w/ gasket

**NPT Adapter Size (supplied with meter)**

**WM-5015:** 1/2" NPT male

**WM-5020:** 3/4" NPT male

**Dimensions**



Ordering Information						
Part Number	Meter Size	Overall Length "L"	NPS Fitting Size	NPT Adapter Size	Meas. Range (GPM)	Nominal Flow (GPM)
WM-5015	1/2"	9.125"	3/4"	1/2"	0.53-13.2	6.6
WM-5020	3/4"	10.25"	1"	3/4"	0.88-22	11